

ELECTRICAL LEGEND

ABBREVIATIONS	
AFF	ABOVE FINISHED FLOOR
ARCH.	ARCHITECT/ARCHITECTURAL
BLDG	BUILDING
C	CONDUIT
CD	CANDELA
CKT	CIRCUIT
C.L.	COLUMN LINE
(E)	EXISTING
ELEC	ELECTRICAL
EMERG	EMERGENCY
FAM/FACP	FIRE ALARM MASTER / FIRE ALARM CONTROL PANEL
FT.	FEET
GF/I B	GROUND FAULT INTERRUPTER/BREAKER
GND	GROUND
HVAC	HEATING, VENTILATING, & AIR CONDITIONING
IDF	INTERMEDIATE DISTRIBUTIONFRAME
LV	LOW VOLTAGE
MDF	MAIN DISTRIBUTION FRAME
MECH	MECHANICAL
N.L.	NIGHT LIGHT
PNL	PANEL
PROVIDE	FURNISH AND INSTALL
PW	PULLWIRE
RS	RAPID START
SD	SUB - DISTRIBUTION
TTB	TELEPHONE TERMINAL BOARD
TVSS	TRANSIENT VOLTAGE SURGE SUPPRESSION
TYP	TYPICAL
WP	WEATHERPROOF

GENERAL	
	REFERENCE NOTE
	EQUIPMENT TAG (ELECTRIC FAN 1 SHOWN)
	ELECTRICAL EQUIPMENT AS IDENTIFIED ONDRAWINGS.
	UNDERGROUND/ UNDERFLOOR RACEWAY
	HOMERUN WITH 3 #12 CONDUCTORS (GROUND NOT SHOWN)
	HOMERUN WITH 3 #10 CONDUCTORS (GROUND NOT SHOWN)
	HOMERUN WITH 4 #10 CONDUCTORS (GROUND NOT SHOWN)
	CONCEALED RACEWAY AND CONDUCTORS. NUMBER OF SLASHES INDICATES NUMBER OF CONDUCTORS. PROVIDE GROUND CONDUCTOR OR NOT SHOWN. ZERO SLASHES = 2 CONDUCTORS WITH 3RD GROUND CONDUCTOR. PROVIDE #12 CONDUCTORS UNLESS OTHERWISE SHOWN.
	LOW VOLTAGE CABLE/ HOMERUN C = CONTROL

POWER	
	POWER PANEL
	GFI +/- DUPLEX RECEPTACLE "x" = MOUNTING HEIGHT AFF IN INCHES. "-" = MOUNT UNDER SINK. GFI = GROUND FAULT INTERRUPTER TYPE, AFCI = PROVIDE ARC-FAULT PROTECTION CIRCUIT, GFIB = PROVIDE GFIBREAKER.
	DOUBLE DUPLEX RECEPTACLE
	SPECIAL/SPECIFIC RECEPTACLE
	DISCONNECT (F=FUSED)
	FLEX CONNECTION
	FLOOR BOX
	BREAKER
	GFI BREAKER
	MOTOR
	CEILING MOUNTED OCCUPANCY SENSOR COMPLETE SYSTEM WITH POWER PACK
	RELAY
	TRANSFORMER
	UTILITY METER
	GROUND
	CT/PT UTILITY METER
	JUNCTION BOX

LIGHTING	
	SWITCH
	SWITCH, a = LIGHTS CONTROLLED, 3 = THREE-WAY.
	OCCUPANCY SENSING WALL SWITCH
	LOW VOLTAGE WALL SWITCH
	DIMMABLE WALL SWITCH
	2x2/2x4/LINEAR RECESSED LIGHT FIXTURE.
	2x2/2x4/LINEAR SURFACE FIXTURE
	STRIP/WRAP FIXTURE
	PENDANT, SURFACE MOUNT FIXTURE
	RECESSED DOWN LIGHT FIXTURE.
	LINEAR FIXTURE IN 4", 8", AND 12" LENGTHS.
	WALL MOUNT LIGHT
	EXIT SIGN WITH DIRECTIONAL ARROWS.
	POLE MOUNTED LIGHTING
	LIGHTING FIXTURE NOTATION A1 = FIXTURE TYPE "A1" E = EMERGENCY POWER.
	OCCUPANCY SENSOR
	PHOTOCELL

LOW VOLTAGE AND SECURITY	
	CARD READER AND DOOR WITH MAGNETIC LOCK.
	CAMERA LOCATION (PROVIDE CAT 6 DATA, AND POWER. CAMERA/CCTV SYSTEM BY OWNER)
	COMBINATION VOICE/DATA OUTLET. TV=WITH TV CABLE OUTLET
	TELEVISION OUTLET

LUMINAIRE SCHEDULE					
ID	DESCRIPTION	MANUFAC.	MOUNTING HEIGHT	LAMP (QTY) WATTS	NOTES
A1	96" LINEAR DOWNLIGHT LITHONIA CLX L96 14000LM SEF FDL MVOLT GZ10 35K 80CRI WH OR APPROVED EQUAL.	LITHONIA	CEILING, CHAIN HUNG 18" AFF	94.78W LED LAMP, 3500K, DIMMABLE, 14323 LUMEN	PROVIDE CORD AND PLUG AS REQUIRED.
B1	24" WALL MOUNT VANITY LED, LITHONIA FMVCCLS 24IN MVOLT 30K 90CRI BN OR APPROVED EQUAL.	LITHONIA	WALL MOUNT	INTEGRAL 17W LED, 3000K, 90CRI, 1300 LUMENS	COORDINATE FIXTURE MOUNTING HEIGHT WITH ARCHITECT.
D1	3.5" LED SEMI RECESSED DOWNLIGHT, IRIS P3LED 09 930 E010 E3LWW H MW OR APPROVED EQUAL.	EATON	CEILING, SEMI RECESSED	15W LED, 3000K, 90CRI, 664 LUMENS	COORDINATE FIXTURE FINISH WITH ARCHITECT.
D2	3.5" LED SEMI RECESSED DOWNLIGHT, IRIS P3LED 09 NFL25 930 E010 E3LWW H MW OR APPROVED EQUAL.	EATON	CEILING, SEMI RECESSED WALL WASH	15W LED, 3000K, 90CRI, 664 LUMENS	COORDINATE FIXTURE FINISH WITH ARCHITECT.
D3	7" LED SURFACE DOWNLIGHT, KICHLER ZEO 44244NILED30 OR APPROVED EQUAL	KICHLER	CEILING, SURFACE	16W LED, 3000K, 90CRI, 820 LUMENS	
F1	48" DIAMETER PENDANT MOUNT LED, HE WILLIAMS RNDP 4 L136 8 30 FXA ACF*4P/D24 DIM UNV WH OR APPROVED EQUAL.	HE WILLIAMS	CEILING, PENDANT MOUNT	95W LED, 3000K, 80CRI, 13649 LUMENS	COORDINATE FIXTURE FINISH WITH ARCHITECT.
F2	36" DIAMETER SURFACE MOUNT LED, HE WILLIAMS RND3 3 L67 8 30 FXA DIM UNV WH OR APPROVED EQUAL.	HE WILLIAMS	CEILING, SURFACE	58W LED, 3000K, 80CRI, 6717 LUMENS	COORDINATE FIXTURE FINISH WITH ARCHITECT.
L1	48" LINEAR RECESSED WALL WASH LED, NEO-RAY 23XR 2 L30 FSR 4 UNV STD 1 D GLR CC OR APPROVED EQUAL.	EATON	CEILING, RECESSED WALL WASH	37W LED, 3000K, 2839 LUMENS	
L2	72" LINEAR RECESSED LED, HE WILLIAMS MX4R TL 6'-0" L12 9 30 F DIM UNV WH OR APPROVED EQUAL.	HE WILLIAMS	CEILING, RECESSED	10.9W/PER FOOT LED, 3000K, 7735 LUMENS	
L3	48" LINEAR RECESSED LED, HE WILLIAMS MX4R TL 4'-0" L12 9 30 F DIM UNV WH OR APPROVED EQUAL.	HE WILLIAMS	CEILING, RECESSED	10.9W/PER FOOT LED, 3000K, 5150 LUMENS	
L4	48" LINEAR COMPACT LOW PROFILE STRIP CHANNEL. LITHONIA ZL1N L48 5000LM FST MVOLT 30K 90CRI WH OR APPROVED EQUAL.	LITHONIA	CEILING, SURFACE	INTEGRAL 29.7W LED, 3000K, 90CRI, 3601 LUMENS	
L5	24" LINEAR COMPACT LOW PROFILE STRIP CHANNEL, LITHONIA ZL1N L24 2500LM FST MVOLT 30K 90CRI WH OR APPROVED EQUAL.	LITHONIA	CEILING, SURFACE	INTEGRAL 29.7W LED, 3000K, 90CRI, 1846 LUMENS	
P1	EXTERIOR POLE LED, STREETWORKS GALLEONAIRE GAA AF 04 LED U T4FT AP 8030 / SSX 6 A 30 AP XX 2 EG OR APPROVED EQUAL.	EATON	30FT POLE MOUNT	(2) 225W LED, 3000K, 24075 LUMENS	COORDINATE FIXTURE FINISH WITH ARCHITECT.
P2	PEDESTRIAN BOLLARD LED, LUMIERE 303-B1-LEDB2 3000 UNV T4 DIM10 CS 36 PC1 OR APPROVED EQUAL.	EATON	3FT BOLLARD	15W LED, 3000K, 1368 LUMENS	COORDINATE FIXTURE FINISH WITH ARCHITECT.
P3	2" LED FLAG LIGHT, LUMIERE 203 8LED 30 25 12 CS DIF OR APPROVED EQUAL.	EATON	SURFACE MOUNT	8W LED, 3000K, 400 LUMENS	COORDINATE FIXTURE FINISH WITH ARCHITECT.
S1	49" LED STRIPLIGHT, CELESTIAL LIGHTING SERPENS GX SERIES SER GX W30 F 49 / SER GX 120 100 / DD 010 24 OR APPROVED EQUAL.	CELESTIAL LIGHTING	SURFACE MOUNT	(4) 20W LED, 3000K, 425 LUMENS	
S2	49" LED STRIPLIGHT, CELESTIAL LIGHTING SERPENS GX SERIES SER GX W30 F 49 / SER GX 120 100 / DD 010 24 OR APPROVED EQUAL.	CELESTIAL LIGHTING	SURFACE MOUNT	(4) 20W LED, 3000K, 425 LUMENS	COORDINATE LOCATION WITH ARCHITECT.
W1	EXTERIOR WALL MOUNT, LUMIERE EON LED 303 W1 LEDB2 3000 UNV T5X DIM10 CS LCF OR APPROVED EQUAL.	EATON	12" WALL MOUNT	15W LED, 3000K, 1425 LUMENS	COORDINATE FIXTURE FINISH WITH ARCHITECT.
W2	EXTERIOR WALL MOUNT, LUMIERE EON LED 303 W2 LEDB2 3000 UNV T5X DIM10 CS LCF OR APPROVED EQUAL.	EATON	12" WALL MOUNT	15W LED, 3000K, 1350 LUMENS	COORDINATE FIXTURE FINISH WITH ARCHITECT.
W3	EXTERIOR WALL WASH, LUMIERE EON LED 303 A1 LEDB2 3000 UNV T5X DIM10 CS 12 LCF OR APPROVED EQUAL.	EATON	12" POLE MOUNT	15W LED, 3000K, 900 LUMENS	COORDINATE FIXTURE FINISH WITH ARCHITECT.
W4	EXTERIOR STAIRWELL LED, LITHONIA AFFINITY AFF PEL XX UVOLT LTP SDRT FCT CW OR APPROVED EQUAL.	LITHONIA LIGHTING	12" WALL MOUNT	20W LED, 4000K, 635 LUMENS	COORDINATE FIXTURE FINISH WITH ARCHITECT.
W5	EXTERIOR FACADE LED, LUMIERE LANTERRA 1002 S1 RCS RW LED3090 W CS 6 L1 UNV WIS OR APPROVED EQUAL.	EATON	WALL MOUNT	10W LED, 3000K, 458 LUMENS	COORDINATE FIXTURE MOUNTING HEIGHT WITH ARCHITECT.
Z1	2X4 RECESSED LED, HE WILLIAMS AT2 2 4 L40 9 30 D D12 WH DIM UNV OR APPROVED EQUAL.	HE WILLIAMS	CEILING, RECESSED	42W LED, 3000K, 3940 LUMENS	COORDINATE FIXTURE FINISH WITH ARCHITECT.
Z2	1X4 LINEAR SURFACE LED, HE WILLIAMS ATS2 1 4 L40 9 30 D D12 WH DIM UNV OR APPROVED EQUAL.	HE WILLIAMS	CEILING, SURFACE	42W LED, 3000K, 3940 LUMENS	COORDINATE FIXTURE FINISH WITH ARCHITECT.

NOTES

- MAINTAIN 6" MINIMUM CLEARANCES BETWEEN INSULATION AND RECESSED FIXTURES.
- PRIOR TO ORDERING LIGHTING FIXTURES AND ACCESSORIES LISTED ABOVE, PROVIDE 3 (THREE) COPIES OF PRODUCT DATA TO ARCHITECT FOR APPROVAL.

EDA Award Number: No. 07-01-07446

Voltage Drop Table (Values given in Ampere-feet*)			
1 Ø	Nominal Voltage		
	120V	240V	
Conductor Size (AWG)	#14	604	1208
	#12	960	1920
	#10	1527	3053
	#8	2429	4858
	#6	3854	7709
	#4	6143	12,287
	#3	7725	15,451
	#2	9730	19,459
	#1	12,329	24,658
	#1/0	15,517	31,034
	#2/0	19,587	39,173
	#3/0	24,658	49,315
3 Ø	#4/0	31,101	62,202
	#4/0	53,908	124,404
Conductor Size (AWG)	#14	1047	2416
	#12	1664	3840
	#10	2646	6107
	#8	4211	9717
	#6	6681	15,418
	#4	10,648	24,573
	#3	13,391	30,901
	#2	16,865	38,919
	#1	21,370	49,315
	#1/0	26,897	62,069
	#2/0	33,950	78,346
	#3/0	42,740	96,630
	#4/0	53,908	124,404

- Table values are given in Ampere-feet.
- Divide the table value by the total circuit Amperes to obtain the maximum distance in feet for each conductor.
- Example:
10A at 120V, using #14 RW90 = 604 ÷ 10 A = 60.4 ft. max. for a 3% voltage drop.

Shane Bump

Digitally signed by Shane Bump
DN: cn=Shane Bump, o=Fluent Engineering, ou, email=shaneb@fluentengineering.com, c=US
Date: 2019.11.22 16:23:51 -08'00'

SHEET INDEX

E0.00	COVER SHEET AND LEGEND
E0.10	EQUIPMENT SCHEDULE
E1.00	ELECTRICAL SITE PLAN
E3.11	FIRST FLOOR WEST WING POWER
E3.12	FIRST FLOOR EAST WING POWER
E3.21	SECOND FLOOR WEST WING POWER
E3.22	SECOND FLOOR EAST WING POWER
E4.11	FIRST FLOOR WEST WING LIGHTING
E4.12	FIRST FLOOR EAST WING LIGHTING
E4.21	SECOND FLOOR WEST WING LIGHTING
E4.22	SECOND FLOOR EAST WING LIGHTING
E6.12	FIRST FLOOR EAST WING TECHNOLOGY
E6.21	SECOND FLOOR WEST WING TECHNOLOGY
E6.22	SECOND FLOOR EAST WING TECHNOLOGY

AKAAN
architecture + design llc

PROJECT TEAM:

CIVIL ENGINEER:
AKS ENGINEERING & FORESTRY
12965 SW Herman Road, Suite 100
Tualatin, OR 97062
P: 503.563.6151
F: 503.563.6152

STRUCTURAL ENGINEER:
PETERSON STRUCTURAL ENGINEERS
9400 SW Barnes Road, Suite 100
Portland, OR 97225
P: 503.292.1635

MEP ENGINEER:
FLUENT ENGINEERING INC.
2110 State Street
Salem, Oregon 97301
P: 503-447-5030

OWNER:
OMIC R&D / OREGON TECH.
Procurement and Contract Services
27500 SW Parkway Avenue
Wilsonville, OR 97070

OWNER'S REPRESENTATIVE:
CRAIG CAMPBELL, Executive Director
OMIC R&D
33701 Charles T. Parker Way
Scappoose, Oregon 97056
503-983-0573

OREGON MANUFACTURING
INNOVATION CENTER R & D

33701 Charles T. Parker Way
Scappoose, Oregon 97056

SCALE: AS SHOWN
DRAWN BY: BJM
CHECKED BY: STB
CAD FILE: ELECTRICAL
NOV. 22, 2019

REVISIONS		
△	DATE	DESCRIPTION

CONTENTS:

COVER SHEET
AND LEGEND

SHEET NO:

E0.00

EQUIPMENT SCHEDULE											
ID	DESCRIPTION	VOLTS	PHASE	AMPS	CONNECTION	DISCONNECT	WIRE SIZE	MOCP	PANEL	CIRCUIT	NOTES
BEF-1	BATHROOM EXHAUST FAN	120	1	2.4	HARD-WIRED	MOTOR-RATED SWITCH	3/4"C - 2#12, 1#12 GND	15A/1P	LP-5	10	
F-1	AIR CURTAIN	208	3	46.2	HARD-WIRED	100A/3P NF N1	1-1/2"C - 3#2, 1#8 GND	100A/3P	HVP-4	8/10/12	
RTU-1	ROOF TOP UNIT	480	3	133	HARD-WIRED	200A/3P NF N3R	2"C - 3#1/0, 1#6 GND	150A/3P	MDP	---	
RTU-2	ROOF TOP UNIT	480	3	133	HARD-WIRED	200A/3P NF N3R	2"C - 3#1/0, 1#6 GND	150A/3P	MDP	---	
SP-1	ELEVATOR SUMP PUMP	120	1	10	HARD-WIRED	MOTOR-RATED SWITCH	3/4"C - 2#12, 1#12 GND	20A/1P	LP-4	40	

NOTES

1. NOT ALL MATERIALS, HARDWARE, AND DEVICES INDICATED. CONTRACTOR IS REQUIRED TO REVIEW ALL MANUFACTURERS INSTRUCTIONS AND PROVIDE MATERIALS AND HARDWARE AS INDICATED BY MANUFACTURER, CODE, AND THESE DOCUMENTS FOR A COMPLETE AND FUNCTIONAL INSTALLATION. PROVIDE CODE REQUIRED EQUIPMENT, RATINGS, SIZES, AND THE LIKE COORDINATED WITH ACTUAL EQUIPMENT INSTALLED.

2. ENSURE ALL DISCONNECTS ARE CAPABLE OF BEING LOCKED IN THE OPEN POSITION.

3. WHERE MOTOR RATED SWITCH IS REQUIRED, PROVIDE MANUAL MOTOR STARTER IF INSTALLED MOTOR IS NOT PROVIDED WITH INTEGRAL OVER LOAD PROTECTION. EVERY MOTOR TO INCLUDE OVERLOAD PROTECTION, COORDINATE SETTINGS WITH ELECTRICAL ENGINEER IF NOT INCLUDED BY MANUFACTURER.

4. PROVIDE NEW BREAKERS IN EXISTING PANELS WHERE REQUIRED. CIRCUITS SHOWN ARE INTENDED FOR REFERENCE ONLY.

PROJECT TEAM:

CIVIL ENGINEER:
AKS ENGINEERING & FORESTRY
12965 SW Herman Road, Suite 100
Tualatin, OR 97062
P: 503.563.6151
F: 503.563.6152

STRUCTURAL ENGINEER:
PETERSON STRUCTURAL ENGINEERS
9400 SW Barnes Road, Suite 100
Portland, OR 97225
P: 503.292.1635

MEP ENGINEER:
FLUENT ENGINEERING INC.
2110 State Street
Salem, Oregon 97301
P: 503-447-5030

OWNER:
OMIC R&D / OREGON TECH.
Procurement and Contract Services
27500 SW Parkway Avenue
Wilsonville, OR 97070

OWNER'S REPRESENTATIVE:
CRAIG CAMPBELL, Executive Director
OMIC R&D
33701 Charles T. Parker Way
Scappoose, Oregon 97056
503-983-0573

OREGON MANUFACTURING
INNOVATION CENTER R & D

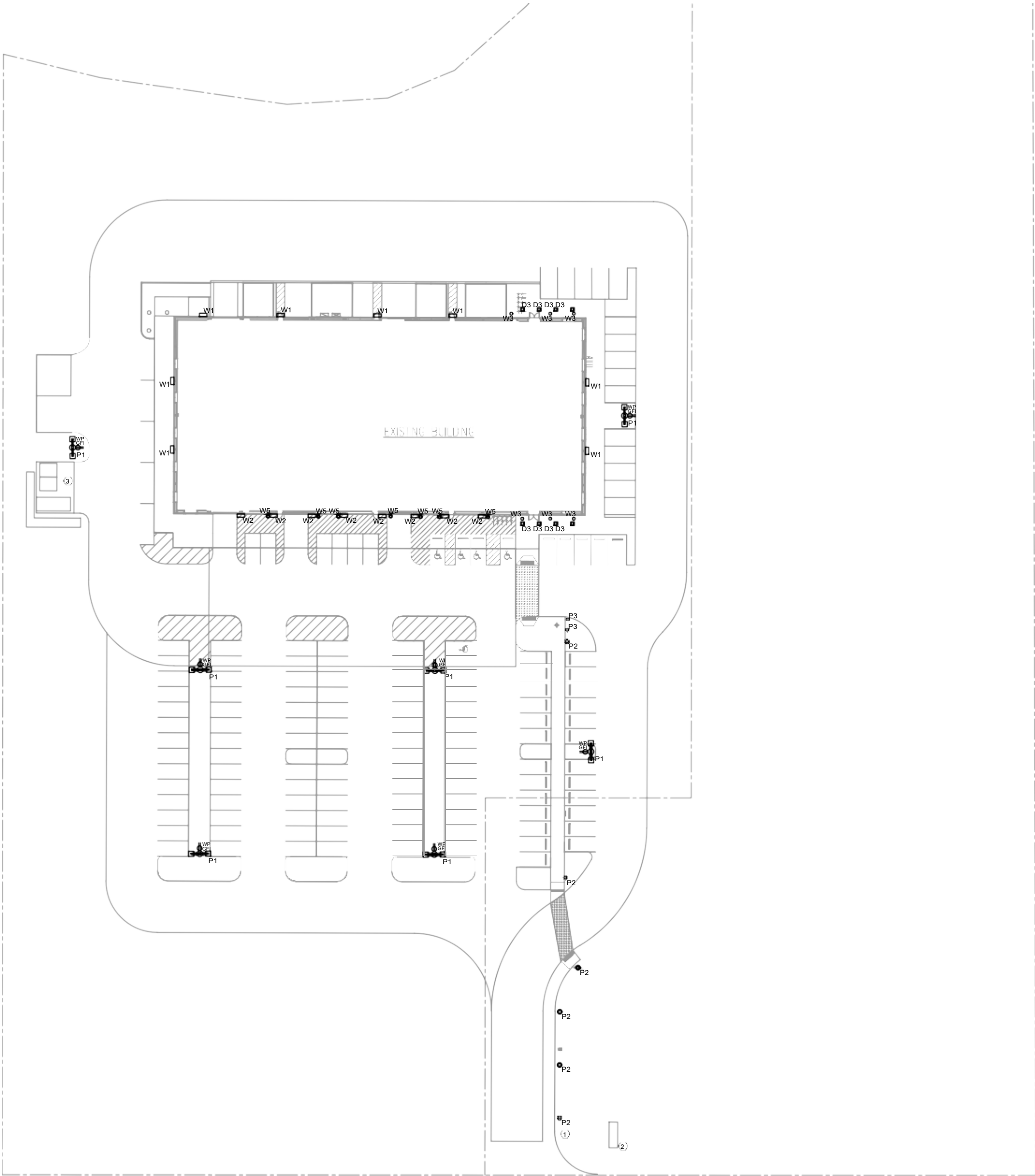
33701 Charles T. Parker Way
Scappoose, Oregon 97056

SCALE: AS SHOWN
DRAWN BY: BJM
CHECKED BY: STB
CAD FILE: ELECTRICAL
DATE: NOV. 22, 2019

REVISIONS	
△	DESCRIPTION

CONTENTS:
EQUIPMENT
SCHEDULE

SHEET NO:



SHEET NOTES

- A. ALL NEW EXTERIOR LIGHTING SHALL BE FED FROM AVAILABLE 20A/1P SPARE BREAKER IN PANEL 'LP-1'.
- B. COORDINATE HEIGHT / LOCATION OF TYPE 'W5' FIXTURES WITH ARCHITECT.
- C. COORDINATE LOCATION OF TYPE 'D3' FIXTURES WITH ARCHITECT.
- D. PROVIDE POWER TO RECEPTACLES ON TYPE 'P1' FIXTURES. CONNECT TO AVAILABLE 20A/1P SPARE BREAKER IN PANEL 'LP-1'.

KEYED NOTES

1. PROVIDE 1" CONDUIT WITH PULLWIRE TO CAMERA LOCATION. COORDINATE EXACT PLACEMENT WITH OWNER PRIOR TO INSTALLATION.
2. PROVIDE TYPE 'S2' FIXTURE AT MONUMENT SIGN. CONNECT TO CIRCUIT SERVING PARKING LOT LIGHTING.
3. PROVIDE (2) TYPE 'L4' FIXTURES IN TRASH ENCLOSURE.

PROJECT TEAM:

CIVIL ENGINEER:
AKS ENGINEERING & FORESTRY
12965 SW Herman Road, Suite 100
Tualatin, OR 97062
P: 503.563.6151
F: 503.563.6152

STRUCTURAL ENGINEER:
PETERSON STRUCTURAL ENGINEERS
9400 SW Barnes Road, Suite 100
Portland, OR 97225
P: 503.292.1635

MEP ENGINEER:
FLUENT ENGINEERING INC.
2110 State Street
Salem, Oregon 97301
P: 503-447-5030

OWNER:
OMIC R&D / OREGON TECH.
Procurement and Contract Services
27500 SW Parkway Avenue
Wilsonville, OR 97070

OWNER'S REPRESENTATIVE:
CRAIG CAMPBELL, Executive Director
OMIC R&D
33701 Charles T. Parker Way
Scappoose, Oregon 97056
503-983-0573

OREGON MANUFACTURING INNOVATION CENTER R & D

33701 Charles T. Parker Way
Scappoose, Oregon 97056

SCALE: AS SHOWN
DRAWN BY: BJM
CHECKED BY: STB
CAD FILE: ELECTRICAL
DATE: NOV. 22, 2019

REVISIONS		
△	DATE	DESCRIPTION

CONTENTS:

ELECTRICAL SITE PLAN

SHEET NO:

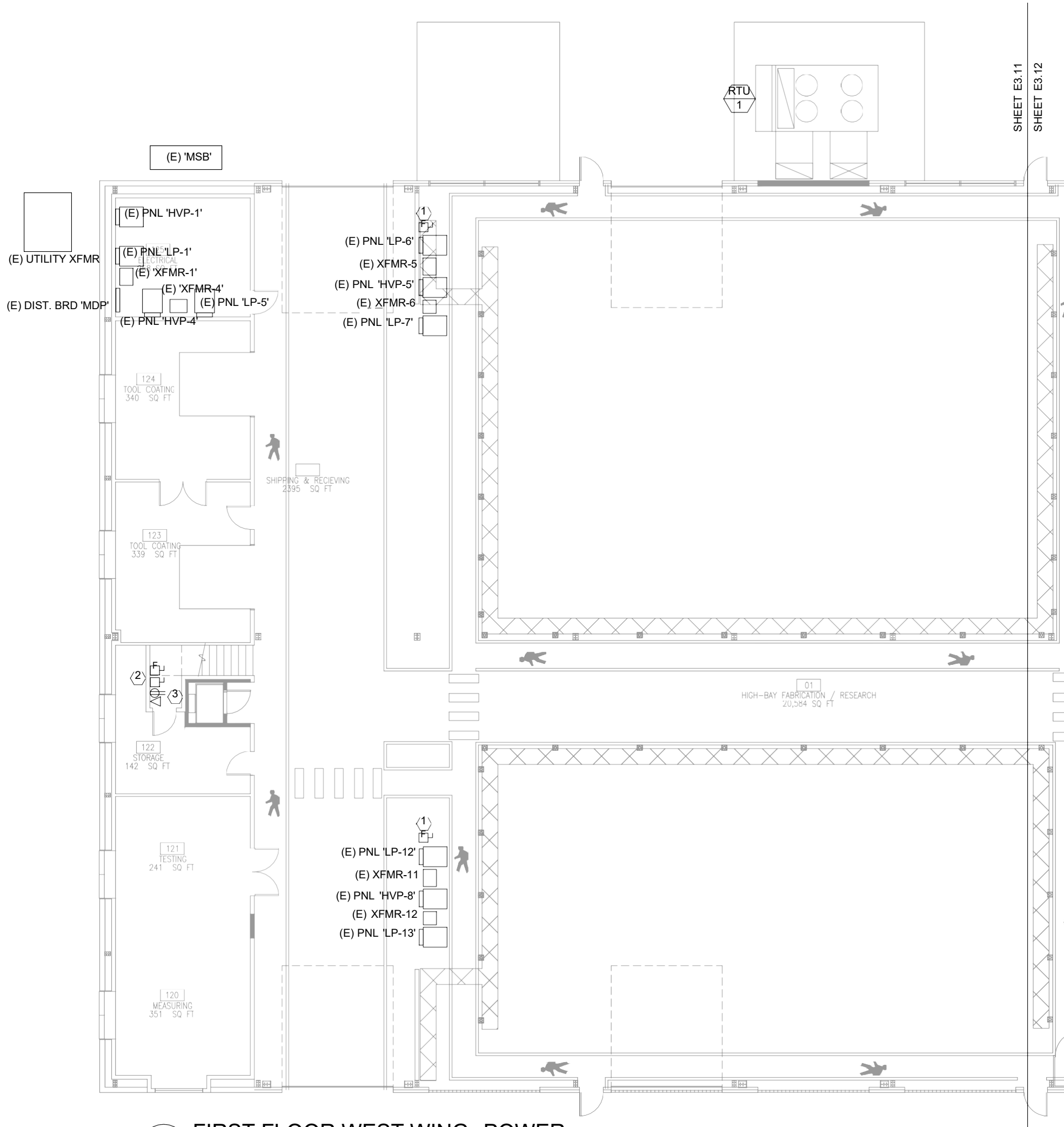
E1.00

SHEET NOTES

A. ALL PANELS ARE EXISTING TO REMAIN.

KEYED NOTES

1. PROVIDE ELECTRICAL CONNECTION FOR OVERHEAD CRANE. CONNECT TO EXISTING 480V/3PH PANEL SERVING THE AREA. PROVIDE NEW BREAKER AS REQUIRED.
2. PROVIDE ELECTRICAL CONNECTION FOR CHAIR LIFT. CONNECT TO EXISTING PANEL 'HVP-4'. PROVIDE NEW BREAKER AS REQUIRED.
3. CONNECT RECEPTACLE TO SPARE 20A/1P BREAKER IN PANEL 'LP-5'.



1 FIRST FLOOR WEST WING POWER
E3.11 SCALE: 1/8" = 1'-0"

PROJECT TEAM:

CIVIL ENGINEER:
AKS ENGINEERING & FORESTRY
12965 SW Herman Road, Suite 100
Tualatin, OR 97062
P: 503.563.6151
F: 503.563.6152

STRUCTURAL ENGINEER:
PETERSON STRUCTURAL ENGINEERS
9400 SW Barnes Road, Suite 100
Portland, OR 97225
P: 503.292.1635

MEP ENGINEER:
FLUENT ENGINEERING INC.
2110 State Street
Salem, Oregon 97301
P: 503-447-5030

OWNER:
OMIC R&D / OREGON TECH.
Procurement and Contract Services
27500 SW Parkway Avenue
Wilsonville, OR 97070

OWNER'S REPRESENTATIVE:
CRAIG CAMPBELL, Executive Director
OMIC R&D
33701 Charles T. Parker Way
Scappoose, Oregon 97056
503-983-0573

OREGON MANUFACTURING
INNOVATION CENTER R & D

33701 Charles T. Parker Way
Scappoose, Oregon 97056

SCALE: AS SHOWN
DRAWN BY: BJM
CHECKED BY: STB
CAD FILE: ELECTRICAL
DATE: NOV. 22, 2019

REVISIONS	
△	DESCRIPTION

CONTENTS: FIRST
FLOOR WEST
WING POWER

SHEET NO:

E3.11

A. ALL PANELS ARE EXISTING TO REMAIN.

1. PROVIDE WBT #WB6X24 CABLE TRAY MOUNTED AT 10' AFF FOR CABLE ACCESS FROM NEW PANELS TO FUTURE WORK AREA. PROVIDE UNISTRUT SUPPORT STRUCTURE AS REQUIRED. COORDINATE LOCATION WITH OWNER TO MAINTAIN PEDESTRIAN PATHWAY.
2. PROVIDE ELECTRICAL CONNECTION FOR ELEVATOR. CONNECT TO EXISTING PANEL 'HVP-4'. PROVIDE NEW BREAKER AS REQUIRED.
3. CONNECT RECEPTACLE TO SPARE 20A/1P BREAKER IN PANEL 'LP-4'.
4. CONNECT ELEVATOR SHAFT POWER AND LIGHTING TO SPARE 20A/1P BREAKER IN PANEL 'LP-4'.



CIVIL ENGINEER:
AKS ENGINEERING & FORESTRY
12665 SW Herman Road, Suite 100
Tualatin, OR 97062
P: 503.683.6151
F: 503.563.6152

STRUCTURAL ENGINEER:
PETERSON STRUCTURAL ENGINEERS
10000 SW Barnes Road, Suite 100
Portland, OR 97225
P: 503.292.1335


M/E/P ENGINEER:
FLUENT ENGINEERING INC.
2110 State Street
Salem, Oregon 97301
P: 503.447-5030

OWNER:
OMG F&D / OREGON TECH.
Procurement and Contract Services
27050 SW Parkway Avenue
Wilsonville, OR 97070

OWNER'S REPRESENTATIVE:
CRANES & CRAPPELL, Executive Director
OMC RAD
333701 Charles T. Parker Way
Scappoose, Oregon 97056
P: 503.983-0573

33701 Charles T. Parker Way
Scappoose, Oregon 97056

SCALE: AS SHOWN
DRAWN BY: BJM
CHECKED BY: STB
CAD FILE: ELECTRICAL
DATE: NOV. 22, 2019

REVISIONS		
	DATE	DESCRIPTION

CONTENTS: FIRST
FLOOR EAST
WING POWER

SHEET NO:

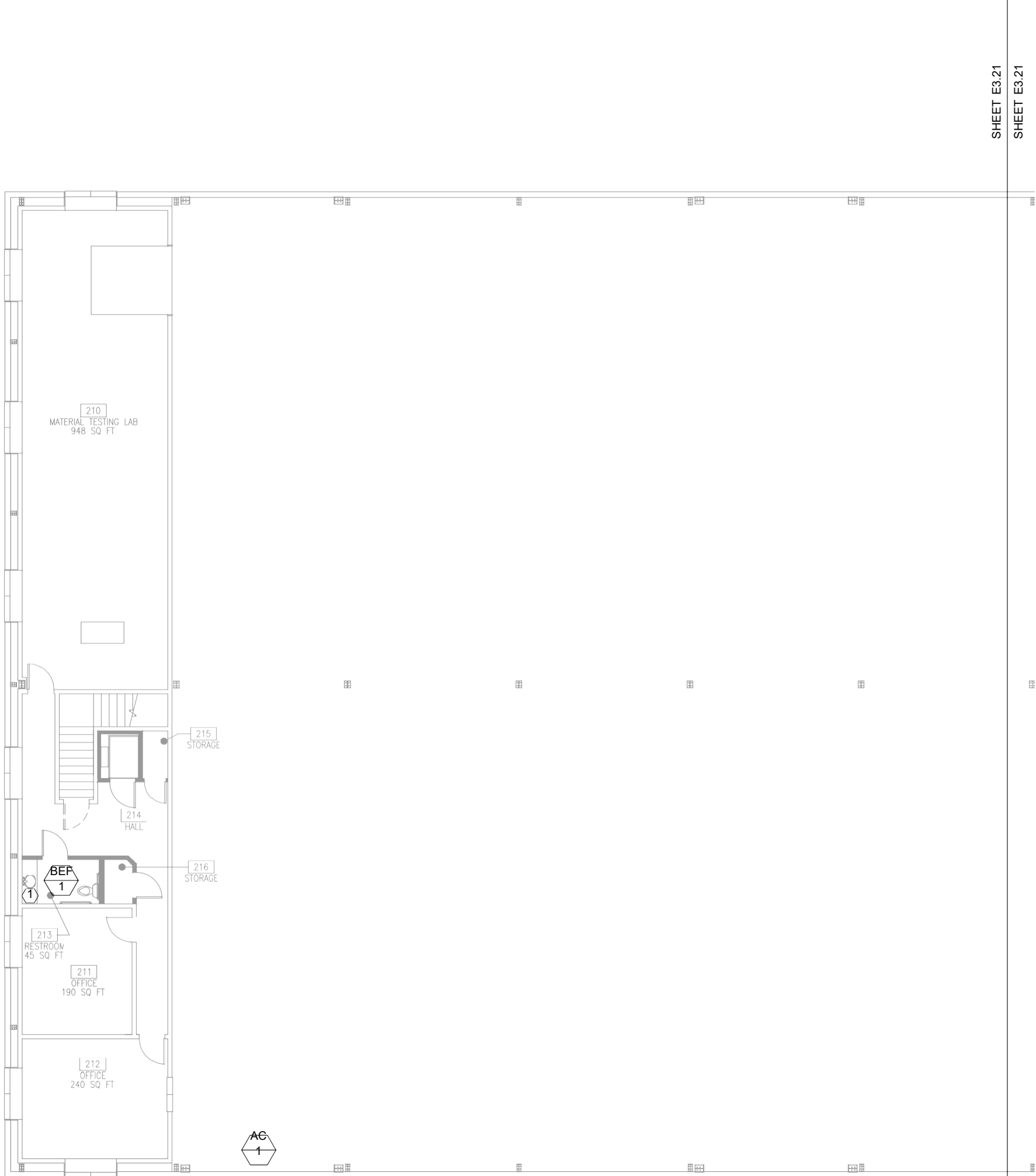
E3.12

SHEET NOTES

- A. PROVIDE INTERLOCK IN BATHROOM WITH EXHAUST FAN FOR OCCUPANCY SENSOR CONTROL.

KEYED NOTES

1. PROVIDE ELECTRICAL CONNECTION TO UNDER SINK WATER HEATER. REFERENCE PLUMBING PLANS FOR EXACT LOCATION. PROVIDE NEW 30A/2P BREAKER IN PANEL 'LP-5'.



1 SECOND FLOOR WEST WING POWER
E3.21 SCALE: 1/8" = 1'-0"

PROJECT TEAM:

CIVIL ENGINEER:
AKS ENGINEERING & FORESTRY
12965 SW Herman Road, Suite 100
Tualatin, OR 97062
P: 503.563.6151
F: 503.563.6152

STRUCTURAL ENGINEER:
PETERSON STRUCTURAL ENGINEERS
9400 SW Barnes Road, Suite 100
Portland, OR 97225
P: 503.292.1635

MEP ENGINEER:
FLUENT ENGINEERING INC.
2110 State Street
Salem, Oregon 97301
P: 503-447-5030

OWNER:
OMIC R&D / OREGON TECH.
Procurement and Contract Services
27500 SW Parkway Avenue
Wilsonville, OR 97070

OWNER'S REPRESENTATIVE:
CRAIG CAMPBELL, Executive Director
OMIC R&D
33701 Charles T. Parker Way
Scappoose, Oregon 97056
503-983-0573

OREGON MANUFACTURING
INNOVATION CENTER R & D

33701 Charles T. Parker Way
Scappoose, Oregon 97056

SCALE: AS SHOWN
DRAWN BY: BJM
CHECKED BY: STB
CAD FILE: ELECTRICAL
DATE: NOV. 22, 2019

REVISIONS		
△	DATE	DESCRIPTION

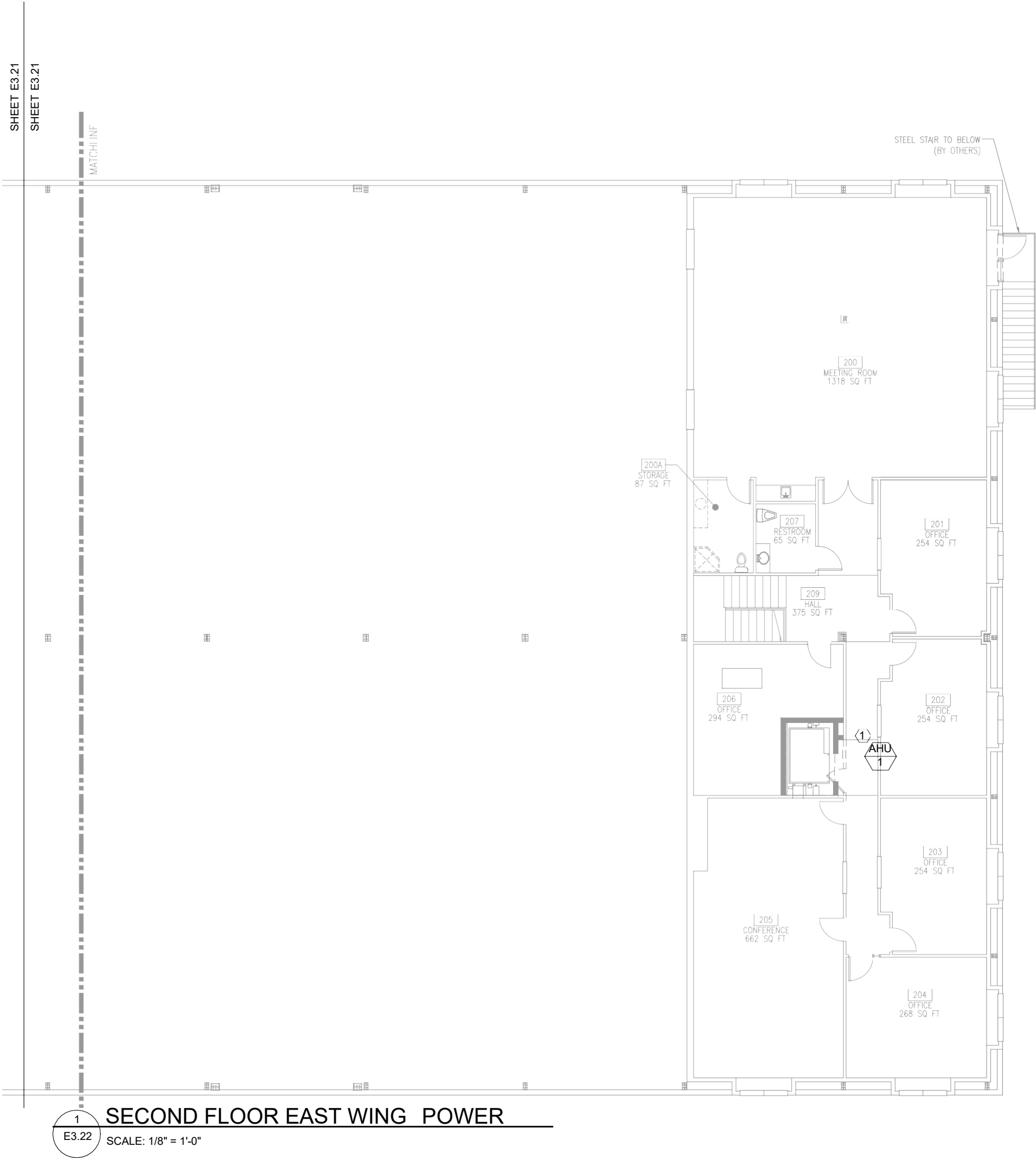
CONTENTS: SECOND
FLOOR WEST
WING POWER

SHEET NO:

E3.21

KEYED NOTES

1. DISCONNECT AND MAKE SAFE EXISTING AIR-HANDLING UNIT IN ATTIC. RECONNECT TO NEW UNIT. EXTEND EXISTING RACEWAY AND CONDUCTORS AS REQUIRED. REFERENCE MECHANICAL PLANS FOR LOCATION OF NEW UNIT.



PROJECT TEAM:

CIVIL ENGINEER:
AKS ENGINEERING & FORESTRY
12965 SW Herman Road, Suite 100
Tualatin, OR 97062
P: 503.563.6151
F: 503.563.6152

STRUCTURAL ENGINEER:
PETERSON STRUCTURAL ENGINEERS
9400 SW Barnes Road, Suite 100
Portland, OR 97225
P: 503.292.1635

MEP ENGINEER:
FLUENT ENGINEERING INC.
2110 State Street
Salem, Oregon 97301
P: 503-447-5030

OWNER:
OMIC R&D / OREGON TECH.
Procurement and Contract Services
27500 SW Parkway Avenue
Wilsonville, OR 97070

OWNER'S REPRESENTATIVE:
CRAIG CAMPBELL, Executive Director
OMIC R&D
33701 Charles T. Parker Way
Scappoose, Oregon 97056
503-983-0573

OREGON MANUFACTURING
INNOVATION CENTER R & D

33701 Charles T. Parker Way
Scappoose, Oregon 97056

SCALE: AS SHOWN
DRAWN BY: BJM
CHECKED BY: STB
CAD FILE: ELECTRICAL
DATE: NOV. 22, 2019

REVISIONS	
△	DESCRIPTION

CONTENTS: **SECOND
FLOOR EAST
WING POWER**

SHEET NO:

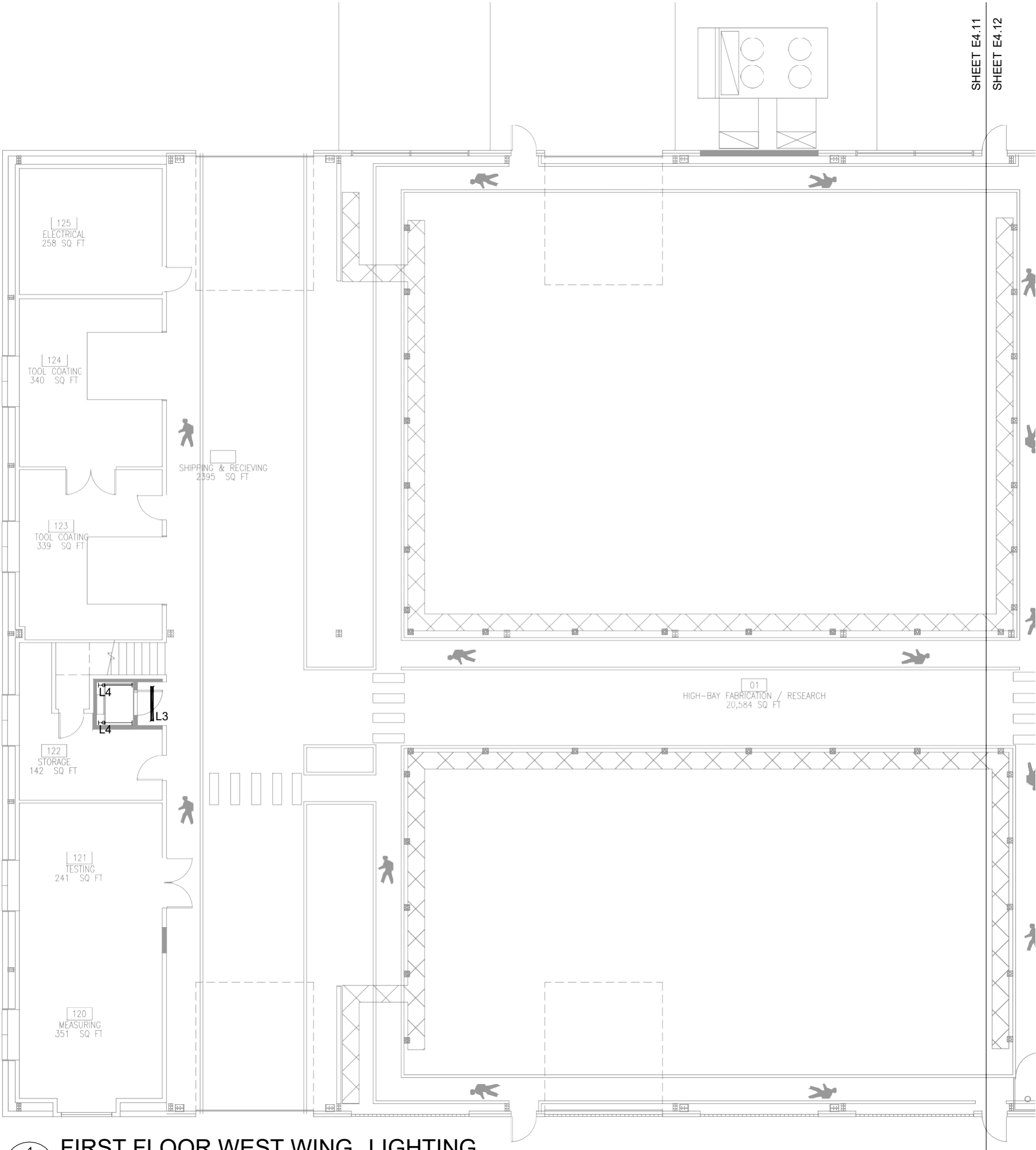
E3.22

SHEET NOTES

A. NOT USED.

KEYED NOTES

1. NOT USED.



1
E4.11
FIRST FLOOR WEST WING LIGHTING
SCALE: 1/8" = 1'-0"

PROJECT TEAM:

CIVIL ENGINEER:
AKS ENGINEERING & FORESTRY
12965 SW Herman Road, Suite 100
Tualatin, OR 97062
P: 503.563.6151
F: 503.563.6152

STRUCTURAL ENGINEER:
PETERSON STRUCTURAL ENGINEERS
9400 SW Barnes Road, Suite 100
Portland, OR 97225
P: 503.292.1635

MEP ENGINEER:
FLUENT ENGINEERING INC.
2110 State Street
Salem, Oregon 97301
P: 503-447-5030

OWNER:
OMIC R&D / OREGON TECH.
Procurement and Contract Services
27500 SW Parkway Avenue
Wilsonville, OR 97070

OWNER'S REPRESENTATIVE:
CRAIG CAMPBELL, Executive Director
OMIC R&D
33701 Charles T. Parker Way
Scappoose, Oregon 97056
503-983-0573

OREGON MANUFACTURING
INNOVATION CENTER R & D

33701 Charles T. Parker Way
Scappoose, Oregon 97056

SCALE: AS SHOWN
DRAWN BY: BJM
CHECKED BY: STB
CAD FILE: ELECTRICAL
DATE: NOV. 22, 2019

REVISIONS	
△	DESCRIPTION

CONTENTS: FIRST
FLOOR WEST
WING LIGHTING

SHEET NO:

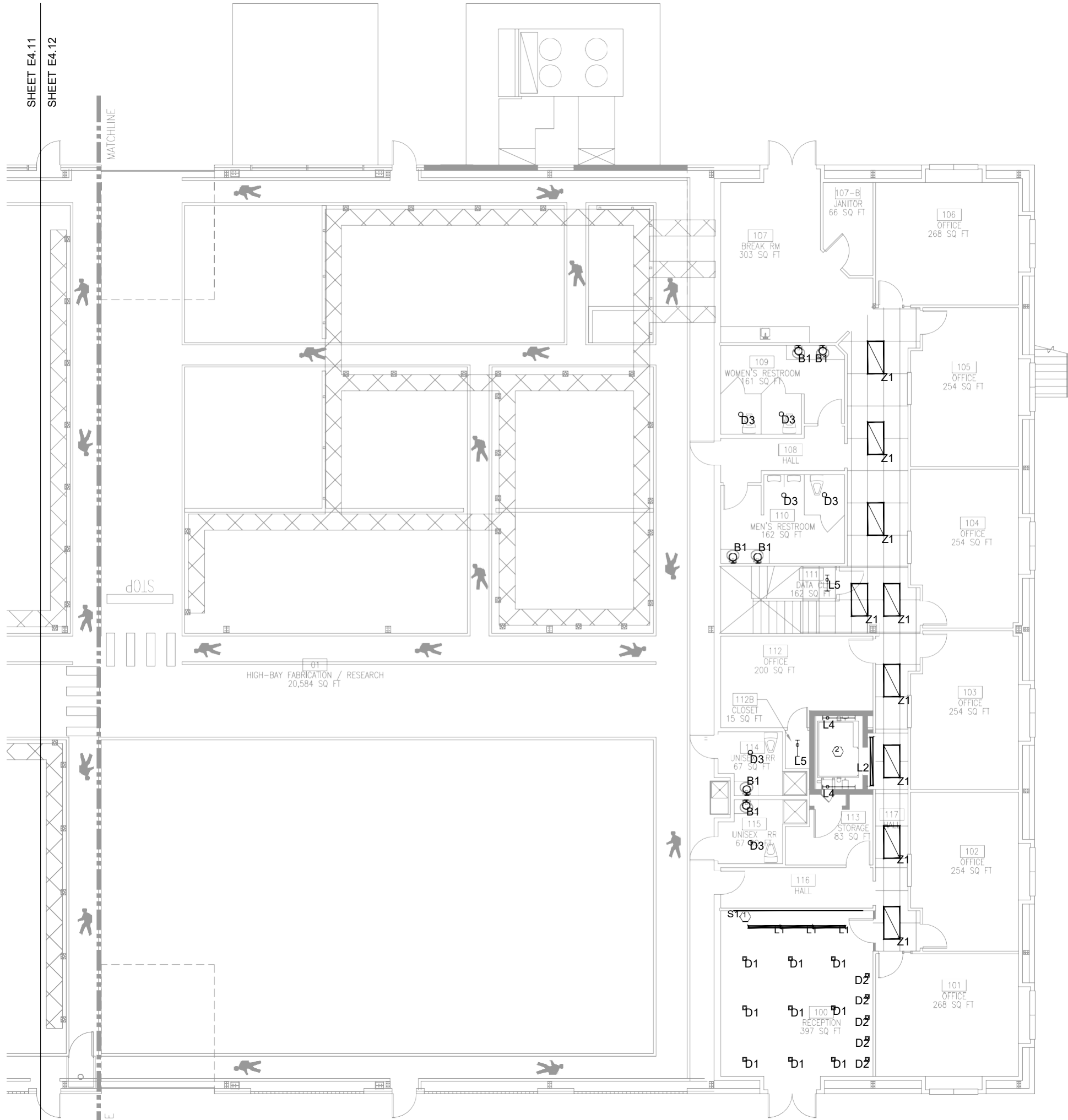
E4.11

SHEET NOTES

- A. REPLACE EXISTING FLUORESCENT LIGHTS IN CORRIDORS AND BACK OF HOUSE AREAS WITH NEW LED FIXTURES AS SHOWN. CONNECT TO EXISTING CIRCUIT SERVING THE AREA.

KEYED NOTES

1. COORDINATE LOCATION OF TYPE 'S1' FIXTURE WITH ARCHITECT.
2. CONNECT NEW LIGHTING IN ELEVATOR PIT AND ELEVATOR SHAFT TO AVAILABLE SPARE 20A/1P BREAKER IN PANEL 'LP-4'.



1
E4.12

FIRST FLOOR EAST WING LIGHTING

SCALE: 1/8" = 1'-0"

PROJECT TEAM:

CIVIL ENGINEER:
AKS ENGINEERING & FORESTRY
12965 SW Herman Road, Suite 100
Tualatin, OR 97062
P: 503.563.6151
F: 503.563.6152

STRUCTURAL ENGINEER:
PETERSON STRUCTURAL ENGINEERS
9400 SW Barnes Road, Suite 100
Portland, OR 97225
P: 503.292.1635

MEP ENGINEER:
FLUENT ENGINEERING INC.
2110 State Street
Salem, Oregon 97301
P: 503-447-5030

OWNER:
OMIC R&D / OREGON TECH.
Procurement and Contract Services
27500 SW Parkway Avenue
Wilsonville, OR 97070

OWNER'S REPRESENTATIVE:
CRAIG CAMPBELL, Executive Director
OMIC R&D
33701 Charles T. Parker Way
Scappoose, Oregon 97056
503-983-0573

**OREGON MANUFACTURING
INNOVATION CENTER R & D**

33701 Charles T. Parker Way
Scappoose, Oregon 97056

SCALE: AS SHOWN
DRAWN BY: BJM
CHECKED BY: STB
CAD FILE: ELECTRICAL
DATE: NOV. 22, 2019

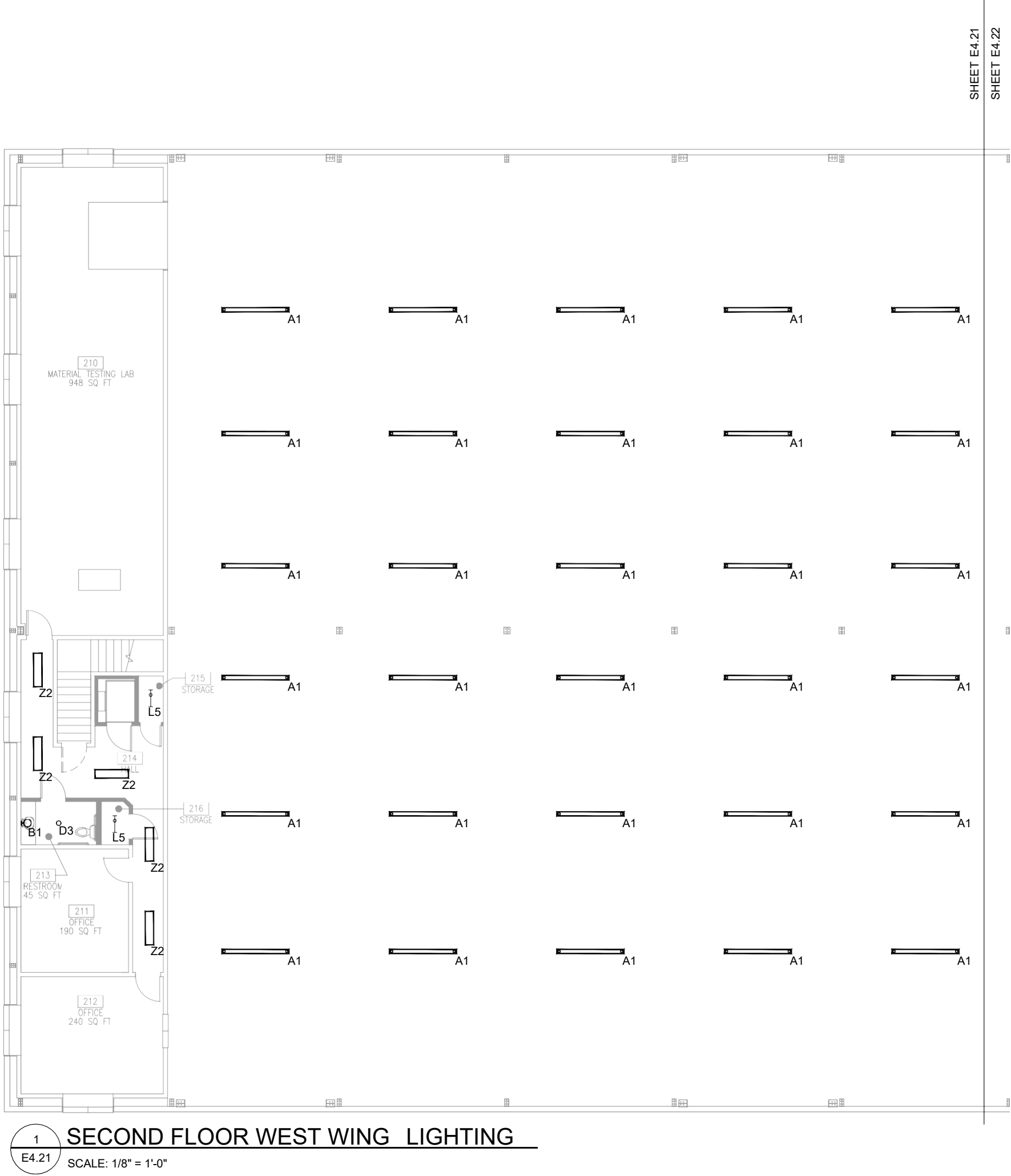
REVISIONS	
△	DESCRIPTION

CONTENTS: **FIRST
FLOOR EAST
WING LIGHTING**

SHEET NO:

SHEET NOTES

- A. REPLACE EXISTING HIGH BAY LIGHTING WITH NEW TYPE 'A1' FIXTURES. RECONNECT TO EXISTING CIRCUIT.
- B. REPLACE EXISTING FLUORESCENT LIGHTS IN CORRIDORS AND BACK OF HOUSE AREAS WITH NEW LED FIXTURES AS SHOWN. CONNECT TO EXISTING CIRCUIT SERVING THE AREA.



PROJECT TEAM:

CIVIL ENGINEER:
AKS ENGINEERING & FORESTRY
12965 SW Herman Road, Suite 100
Tualatin, OR 97062
P: 503.563.6151
F: 503.563.6152

STRUCTURAL ENGINEER:
PETERSON STRUCTURAL ENGINEERS
9400 SW Barnes Road, Suite 100
Portland, OR 97225
P: 503.292.1635

MEP ENGINEER:
FLUENT ENGINEERING INC.
2110 State Street
Salem, Oregon 97301
P: 503-447-5030

OWNER:
OMIC R&D / OREGON TECH.
Procurement and Contract Services
27500 SW Parkway Avenue
Wilsonville, OR 97070

OWNER'S REPRESENTATIVE:
CRAIG CAMPBELL, Executive Director
OMIC R&D
33701 Charles T. Parker Way
Scappoose, Oregon 97056
503-983-0573

OREGON MANUFACTURING
INNOVATION CENTER R & D

33701 Charles T. Parker Way
Scappoose, Oregon 97056

SCALE: AS SHOWN
DRAWN BY: BJM
CHECKED BY: STB
CAD FILE: ELECTRICAL
DATE: NOV. 22, 2019

REVISIONS	
△	DESCRIPTION

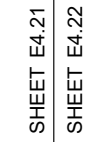
CONTENTS: **SECOND FLOOR WEST WING LIGHTING**

SHEET NO:

E4.21

A. REPLACE EXISTING HIGH BAY LIGHTING WITH NEW TYPE 'A1' FIXTURES. RECONNECT TO EXISTING CIRCUIT.

B. REPLACE EXISTING FLUORESCENT LIGHTS IN CORRIDORS AND BACK OF HOUSE AREAS WITH NEW LED FIXTURES AS SHOWN. CONNECT TO EXISTING CIRCUIT SERVING THE AREA.



101 ST HELENS ST
ST HELENS, OR 97051
T: 503 366 3050 F: 503 366 3055

CIVIL ENGINEER:
AKS ENGINEERING & FORESTRY
12965 SW Herman Road, Suite 100
Tualatin, OR 97062
P: 503.563.6151
F: 503.563.6152

STRUCTURAL ENGINEER:
PETERSON STRUCTURAL ENGINEERS
9400 SW Barnes Road, Suite 100
Portland, OR 97225
P. 503.292.1635

MEP ENGINEER:
FLUENT ENGINEERING INC.
2110 State Street
Salem, Oregon 97301
P. 503-447-5030

OWNER:
OMIC R&D / OREGON TECH.
Procurement and Contract Services
27500 SW Parkway Avenue
Wilsonville, OR 97070

OWNER'S REPRESENTATIVE:
CRAIG CAMPBELL, Executive Director
OMIC R&D
33701 Charles T. Parker Way
Scappoose, Oregon 97056
503-983-0573

OREGON MANUFACTURING
INNOVATION CENTER R & D

33701 Charles T. Parker Way
Scappoose, Oregon 97056

SCALE: AS SHOWN
DRAWN BY: BJM
CHECKED BY: STE
CAD FILE: ELECTRICAL
DATE: NOV. 22, 2019

REVISIONS	
△	DESCRIPTION

CONTENTS: **SECOND
FLOOR EAST
WING LIGHTING**

SHEET NO:

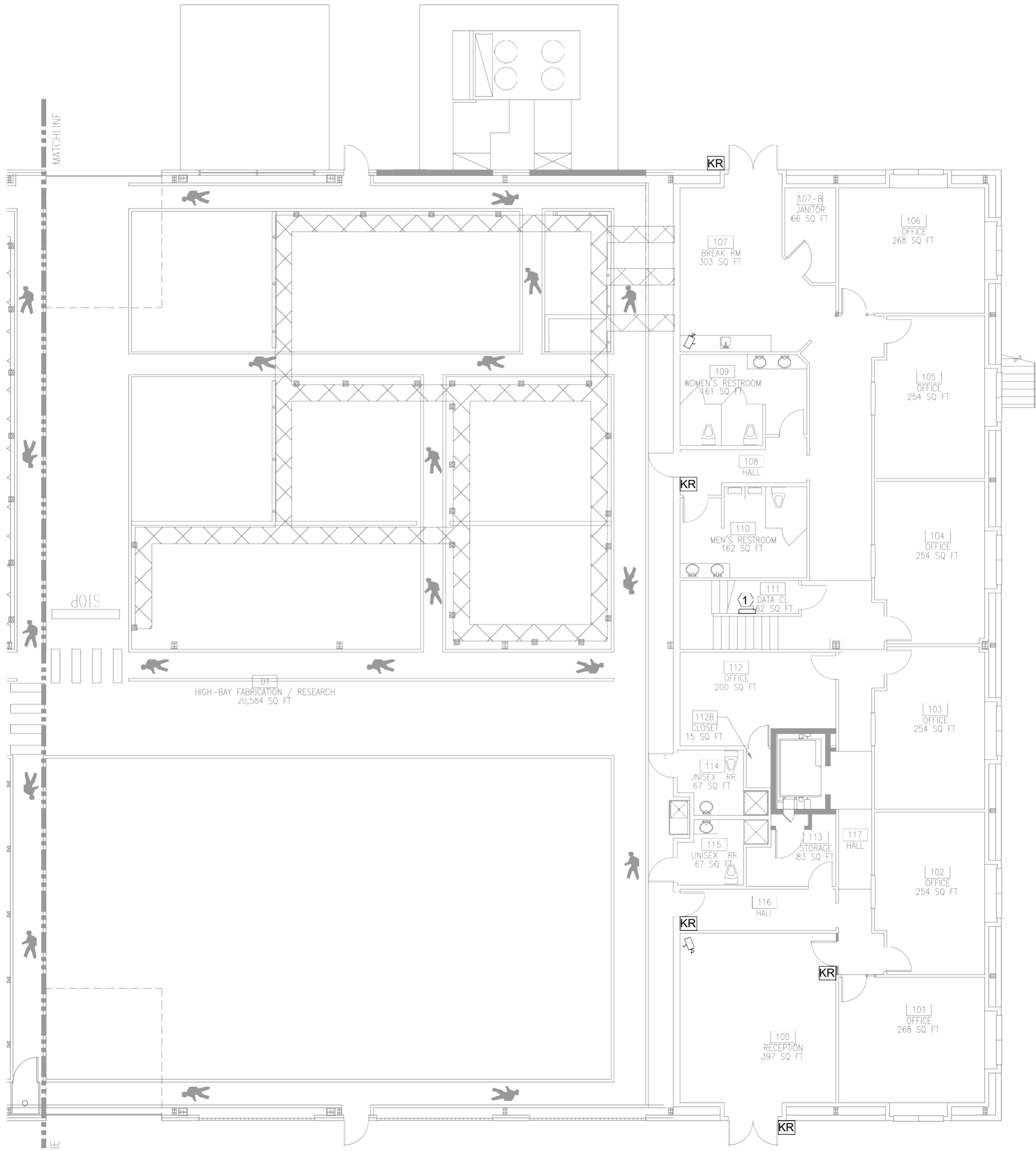
E4.22

SHEET NOTES

A. PROVIDE NEW CAMERAS AT LOCATIONS SHOWN. RE-USE EXISTING CAT 6 DATA AND POWER WHERE AVAILABLE. CONNECT NEW CAMERAS TO EXISTING SECURITY SYSTEM IN DATA CLOSET 111.

KEYED NOTES

1. APPROXIMATE LOCATION OF EXISTING SECURITY PANEL.



1
E6.12
FIRST FLOOR EAST WING TECHNOLOGY
SCALE: 1/8" = 1'-0"

PROJECT TEAM:

CIVIL ENGINEER:
AKS ENGINEERING & FORESTRY
12965 SW Herman Road, Suite 100
Tualatin, OR 97062
P: 503.563.6151
F: 503.563.6152

STRUCTURAL ENGINEER:
PETERSON STRUCTURAL ENGINEERS
9400 SW Barnes Road, Suite 100
Portland, OR 97225
P: 503.292.1635

MEP ENGINEER:
FLUENT ENGINEERING INC.
2110 State Street
Salem, Oregon 97301
P: 503.447.5030

OWNER:
OMIC R&D / OREGON TECH.
Procurement and Contract Services
27500 SW Parkway Avenue
Wilsonville, OR 97070

OWNER'S REPRESENTATIVE:
CRAIG CAMPBELL, Executive Director
OMIC R&D
33701 Charles T. Parker Way
Scappoose, Oregon 97056
503-983-0573

OREGON MANUFACTURING
INNOVATION CENTER R & D

33701 Charles T. Parker Way
Scappoose, Oregon 97056

SCALE: AS SHOWN
DRAWN BY: BJM
CHECKED BY: STB
CAD FILE: ELECTRICAL
DATE: NOV. 22, 2019

REVISIONS	
△	DESCRIPTION

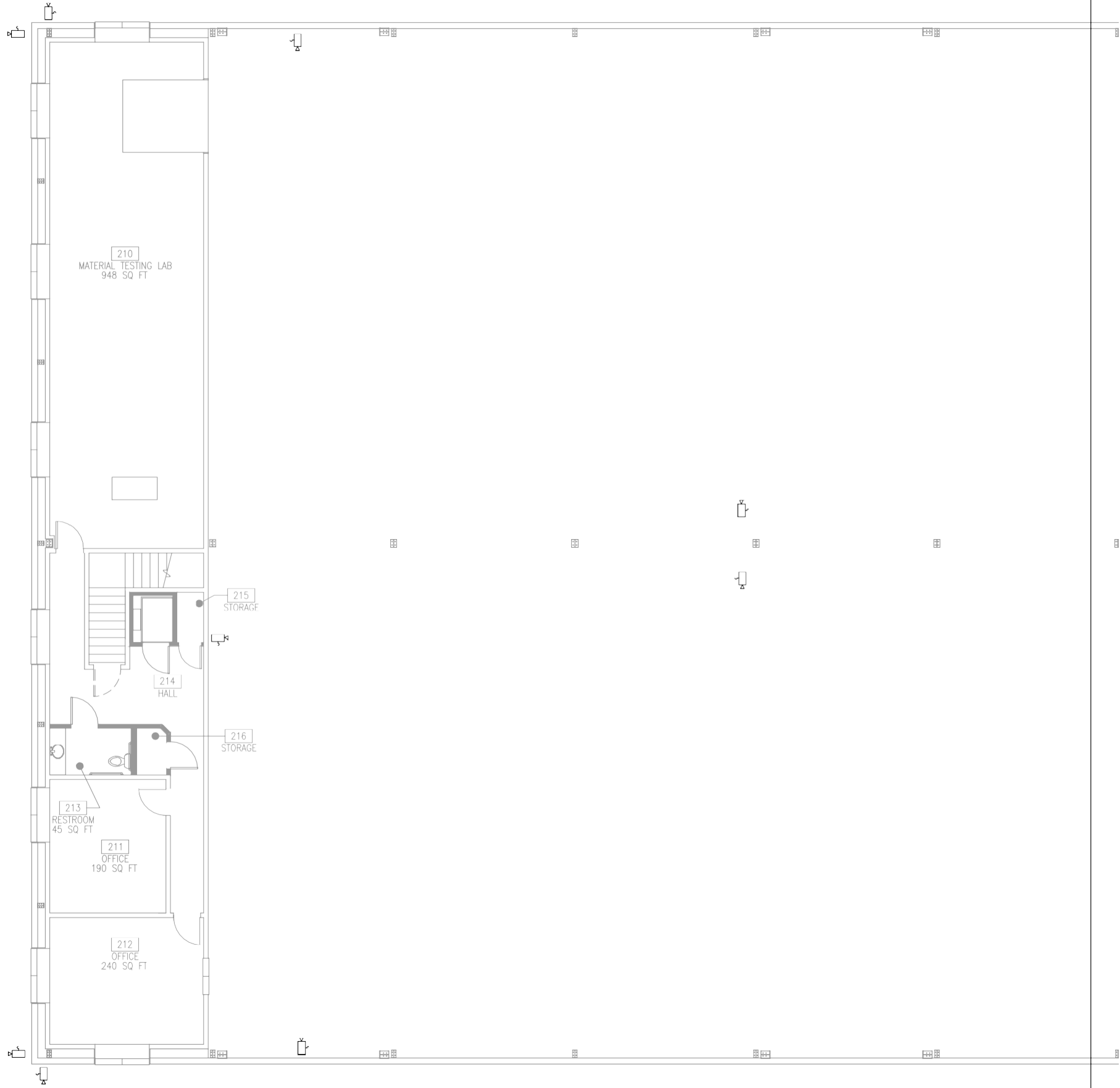
CONTENTS: FIRST FLOOR
EAST WING
TECHNOLOGY

SHEET NO:

E6.12

SHEET NOTES

A. PROVIDE NEW CAMERAS AT LOCATIONS SHOWN. RE-USE EXISTING CAT 6 DATA AND POWER WHERE AVAILABLE. CONNECT NEW CAMERAS TO EXISTING SECURITY SYSTEM IN DATA CLOSET 111.



1 SECOND FLOOR WEST WING TECHNOLOGY
E6.21 SCALE: 1/8" = 1'-0"

SHEET E4.21
SHEET E4.22

PROJECT TEAM:

CIVIL ENGINEER:
AKS ENGINEERING & FORESTRY
12965 SW Herman Road, Suite 100
Tualatin, OR 97062
P: 503.563.6151
F: 503.563.6152

STRUCTURAL ENGINEER:
PETERSON STRUCTURAL ENGINEERS
9400 SW Barnes Road, Suite 100
Portland, OR 97225
P: 503.292.1635

MEP ENGINEER:
FLUENT ENGINEERING INC.
2110 State Street
Salem, Oregon 97301
P: 503-447-5030

OWNER:
OMIC R&D / OREGON TECH.
Procurement and Contract Services
27500 SW Parkway Avenue
Wilsonville, OR 97070

OWNER'S REPRESENTATIVE:
CRAIG CAMPBELL, Executive Director
OMIC R&D
33701 Charles T. Parker Way
Scappoose, Oregon 97056
503-983-0573

OREGON MANUFACTURING
INNOVATION CENTER R & D

33701 Charles T. Parker Way
Scappoose, Oregon 97056

SCALE: AS SHOWN
DRAWN BY: BJM
CHECKED BY: STB
CAD FILE: ELECTRICAL
DATE: NOV. 22, 2019

REVISIONS		
△	DATE	DESCRIPTION

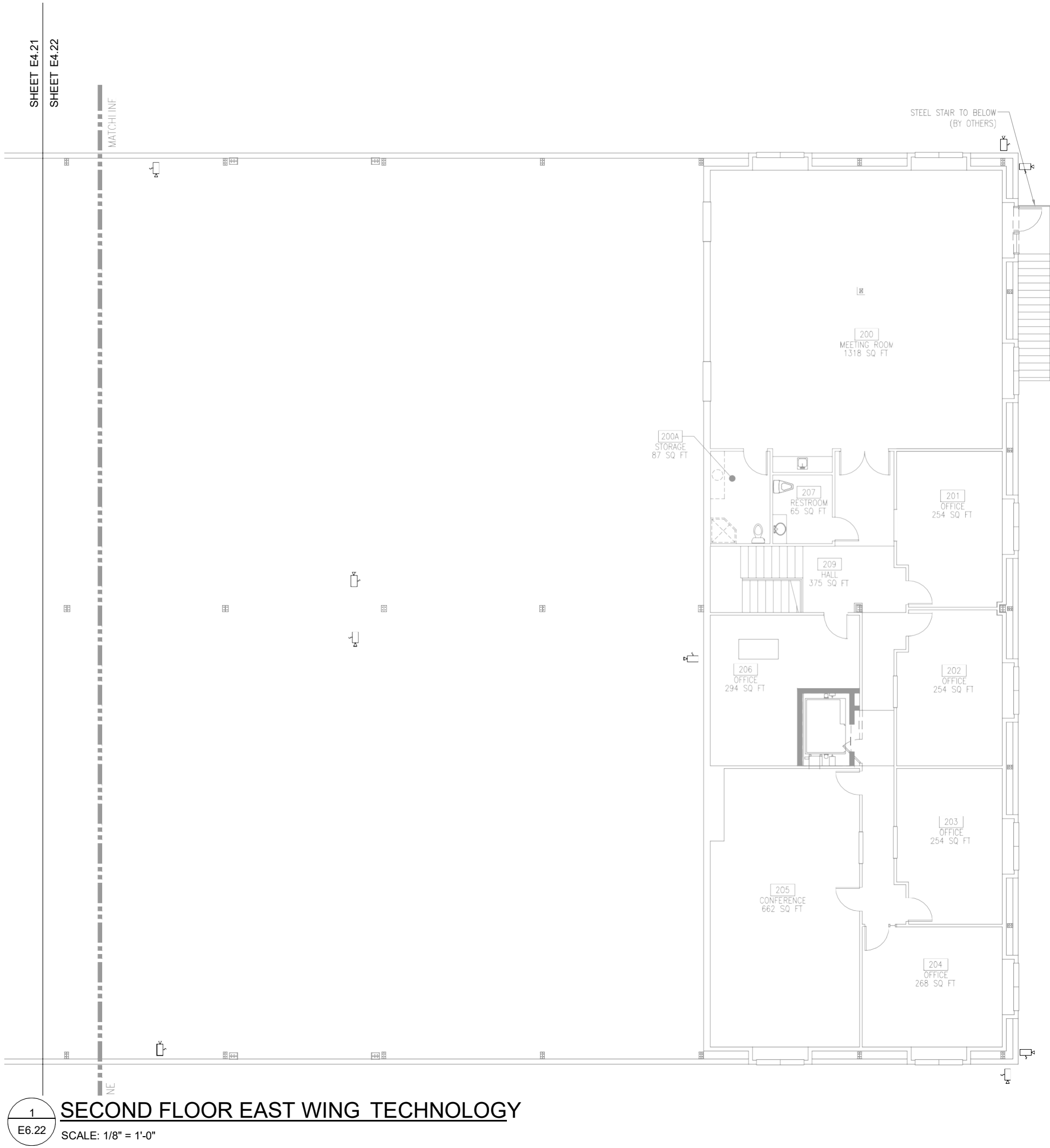
CONTENTS: SECOND
FLOOR WEST WING
TECHNOLOGY

SHEET NO:

E6.21

SHEET NOTES

A. PROVIDE NEW CAMERAS AT LOCATIONS SHOWN. RE-USE EXISTING CAT 6 DATA AND POWER WHERE AVAILABLE. CONNECT NEW CAMERAS TO EXISTING SECURITY SYSTEM IN DATA CLOSET 111.



1
E6.22
SCALE: 1/8" = 1'-0"

PROJECT TEAM:

CIVIL ENGINEER:
AKS ENGINEERING & FORESTRY
12965 SW Herman Road, Suite 100
Tualatin, OR 97062
P: 503.563.6151
F: 503.563.6152

STRUCTURAL ENGINEER:
PETERSON STRUCTURAL ENGINEERS
9400 SW Barnes Road, Suite 100
Portland, OR 97225
P: 503.292.1635

MEP ENGINEER:
FLUENT ENGINEERING INC.
2110 State Street
Salem, Oregon 97301
P: 503-447-5030

OWNER:
OMIC R&D / OREGON TECH.
Procurement and Contract Services
27500 SW Parkway Avenue
Wilsonville, OR 97070

OWNER'S REPRESENTATIVE:
CRAIG CAMPBELL, Executive Director
OMIC R&D
33701 Charles T. Parker Way
Scappoose, Oregon 97056
503-983-0573

OREGON MANUFACTURING
INNOVATION CENTER R & D

33701 Charles T. Parker Way
Scappoose, Oregon 97056

SCALE: AS SHOWN
DRAWN BY: BJM
CHECKED BY: STB
CAD FILE: ELECTRICAL
DATE: NOV. 22, 2019

REVISIONS	
△	DESCRIPTION

CONTENTS: SECOND
FLOOR EAST WING
TECHNOLOGY

SHEET NO:

E6.22