



PEBB 2022 Open Enrollment: Dental

Delta Dental

Delta Dental plans

Delta Dental Premier® Network

- Largest dental network in Oregon
- Over 2,400 providers in Oregon & over 155,000 providers nationwide

Delta Dental PPOSM Network

- Over 1,300 providers in Oregon & over 113,000 providers nationwide



Dental plan options

| Plan options | Full-time Delta Dental PPO | | Full-time Delta Dental Premier | Part-time Premier plan |
|--|----------------------------|----------------|--------------------------------|------------------------|
| Network | In-network | Out-of-network | | |
| Deductible | \$50 | | \$50 | \$50 |
| Benefit maximum | \$1,750 | | \$1,750 | \$1,250 |
| | | | In-network, members pay | |
| Preventive¹/ diagnostic services | 0% ² | 10% | 0% ² | 0% |
| Basic services | 20% - 0% | 30% | 20% | 50% |
| Major services | 50% | 50% | 50% | 50% |
| Occlusal guards³ <i>(night guards* and athletic mouth guards)</i> | 0% | 0% | 0% | 0% |
| Nitrous oxide | 50% | 50% | 50% | 50% |
| Orthodontic <i>(Lifetime maximum - \$1,500)</i> | 50% | 50% | 50% | N/A |

¹ Preventive services will not accrue toward the plan maximum.

² Deductible waived.

³ \$150 maximum, once every 5 years.

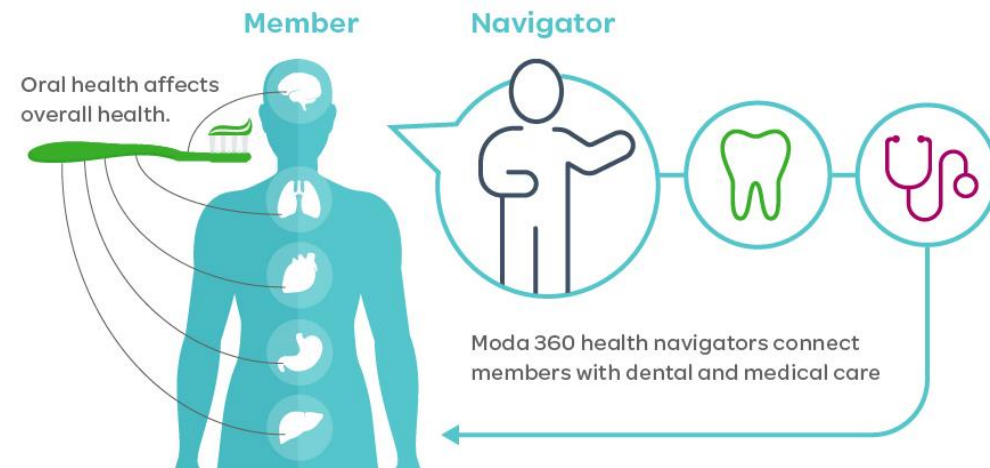


moda 360 | Dental integration

We are adding dental integration to our Moda 360 program. This means if you are enrolled in a Moda Health medical and Delta Dental plan, you will be connected to a Moda 360 Health Navigator

The Health Navigator can help members with:

- Claims and provider billing support
- Finding providers
- Connections to providers participating in the Health through Oral Wellness® program
- Connections to appropriate programs, tools and resources



Health through Oral Wellness[®]

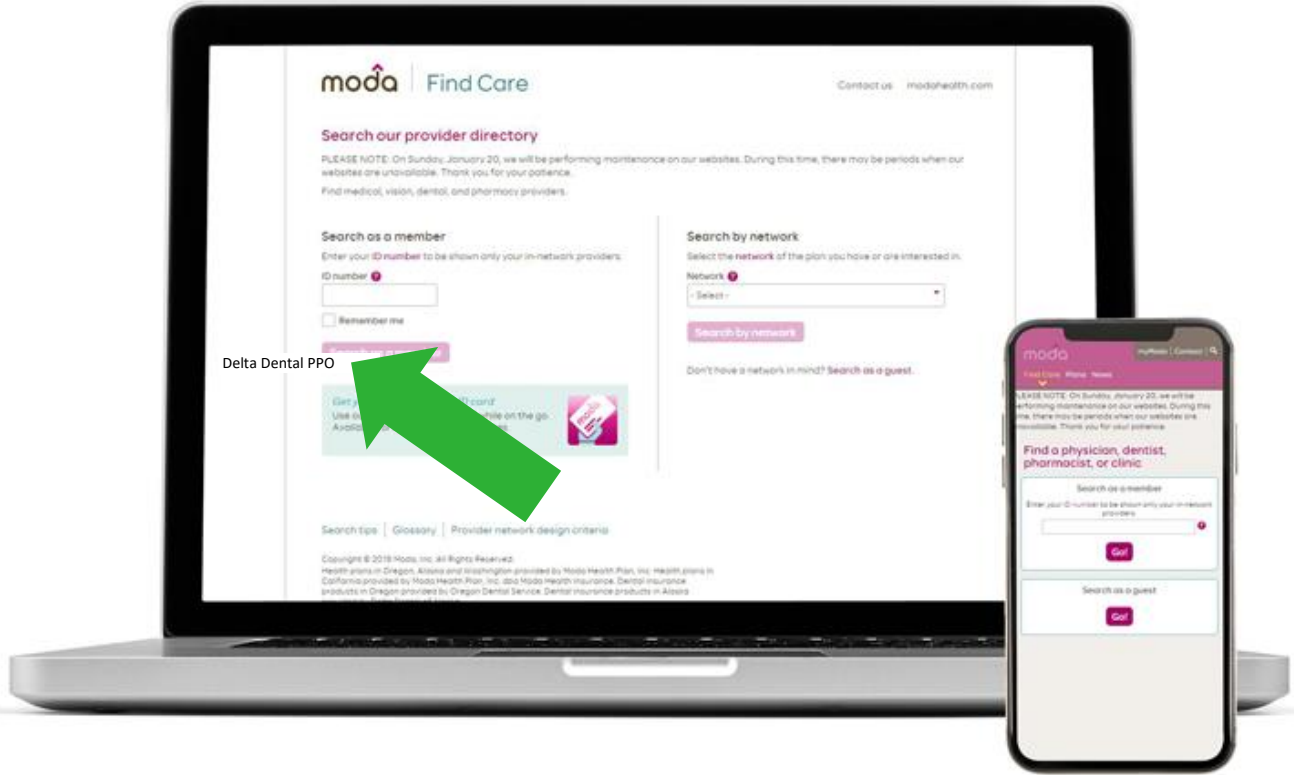
- All PEBB members have access to the Health through Oral Wellness program
 - A patient-centered wellness program that helps you maintain better oral health through a risk assessment, education and additional evidence-based preventive care
- Providers participating in the program use an oral health assessment to find out your risk of tooth decay, gum disease and oral cancer
- You may qualify for the following services depending on your risk score:
 - Additional cleanings
 - Fluoride treatment
 - Sealants
 - Periodontal maintenance
 - Nutritional counseling
- To see which providers are participating in the Health through Oral Wellness program, there is a green badge shown in Find Care
- For more details on the Health through Oral Wellness Program – please see our website: www.modahealth.com/pebb



Find Care – Dental

Search for contracted providers in your area

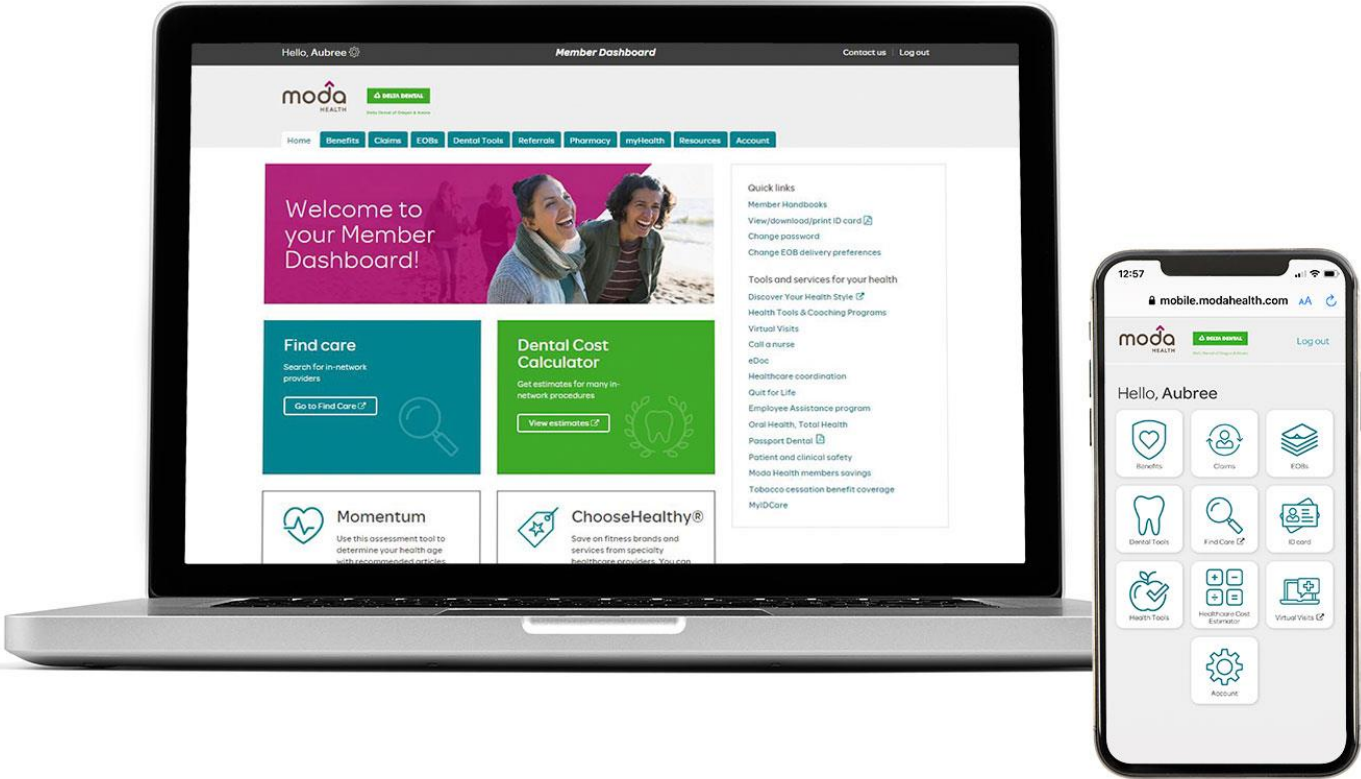
- Delta Dental Premier and Delta Dental PPO




Member care resources

Delta Dental

PEBB dedicated website



 modahealth.com/pebb



Member Dashboard

- See your dental benefits & Member Handbook
- Check claims and review electronic explanations of benefits (EOBs)
- Find a dentist and connect with health professionals on the phone or online
- Access to the estimated cost calculator
- New! Instantly chat with a Moda 360 Health Navigator

Customer service

Available Monday through Friday from 7:30 a.m. to 5:30 p.m. Pacific time

- Dental members with a Moda Medical plan: 833-681-2117
- Dental only members: 844-827-7100



Or email our Health Navigator team at PEBBquestions@modahealth.com

You can also message one instantly through your [Member Dashboard](#)

Thank you



Delta Dental of Oregon & Alaska