

WOU Community Health + Polk County COVID-19 Project

Data Brief

November 2nd, 2020

County Rankings of Incidence in the Last Week

Polk: 23rd

Marion: 9th

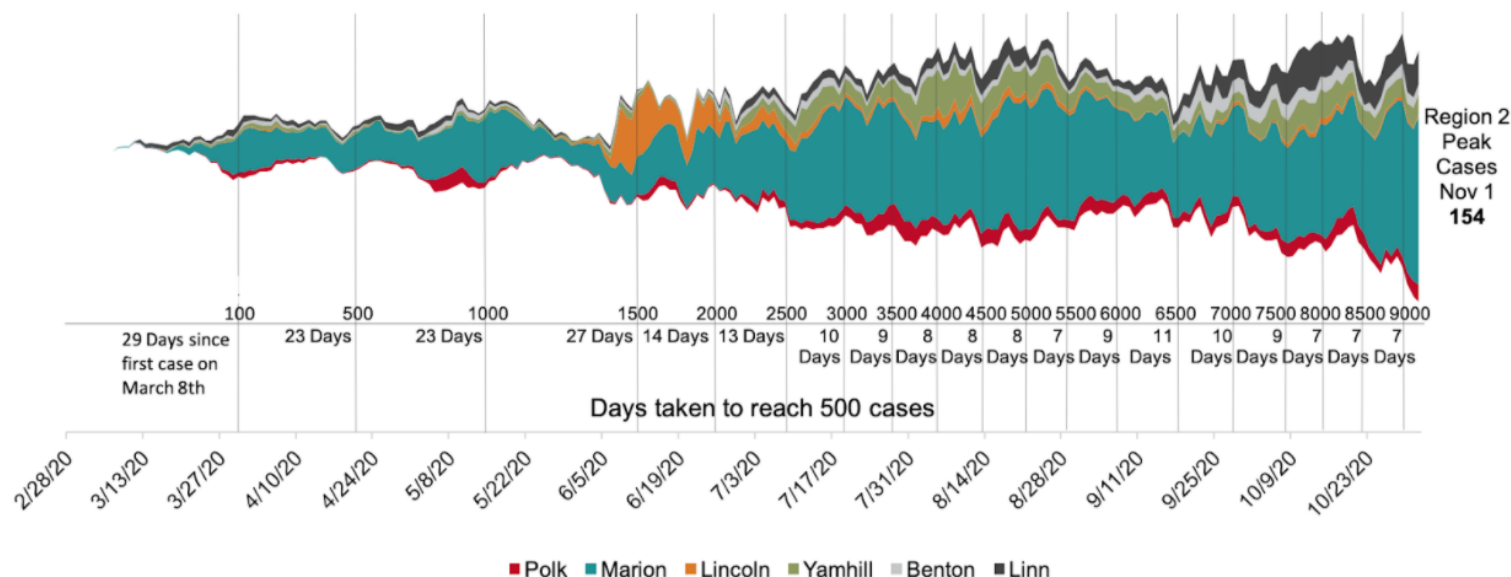
*Out of 36 Counties

Cumulative Case Numbers:

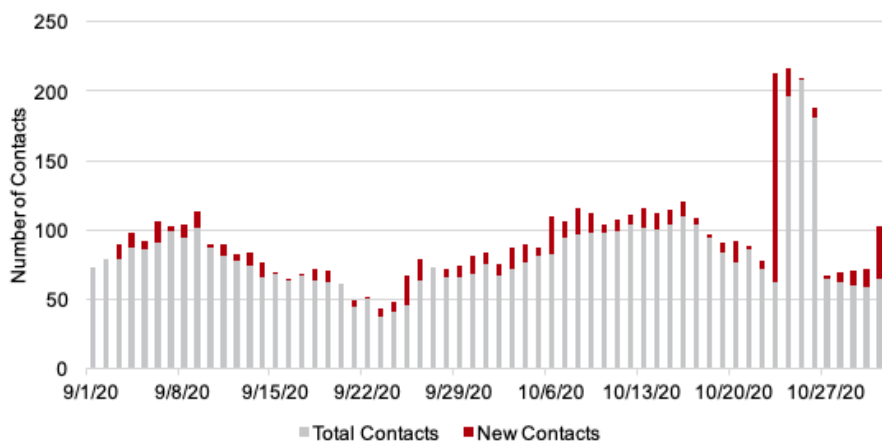
Oregon: 44,923 • Polk: 690 • Marion 6,121

Individuals Currently Being Traced by WOU
Contact Tracing Team: **94**
(Last Week: 209)

Region 2 Counties Daily Cases of COVID-19, as of November 1, 2020.
Daily Cases of COVID-19 (7 Day Average)



New and Total Contacts Monitored by WOU Contact Tracing Team: as of October 31, 2020



New to Stream Graphs? Main Takeaways From Our New Data Visualization!

- COVID-19 cases in Region 2 increased in June, subsided a small amount in September, and have steadily increased since then.
- In mid-June, Lincoln county (orange) experienced an outbreak when more than 100 employees of Pacific Seafoods tested positive for COVID-19.
- Marion County consistently ranks highest in case numbers.

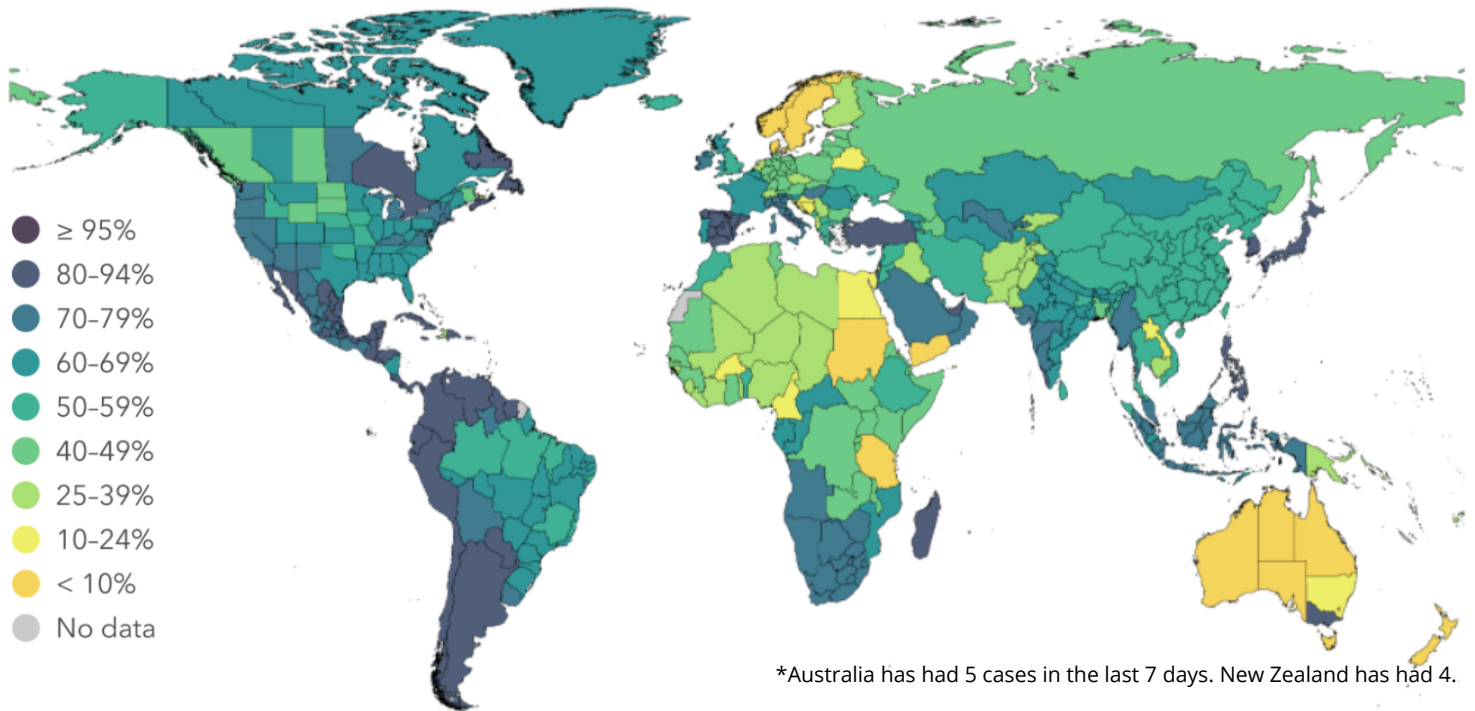
Data Brief Produced by: Maddie Dirren, Adam Chynoweth, Queenie Love Agbayani, Jenny Leon-Perez, Dr. Emily Vala-Haynes, Dr. Megan Patton-Lopez. Dr. Leanne Cusack



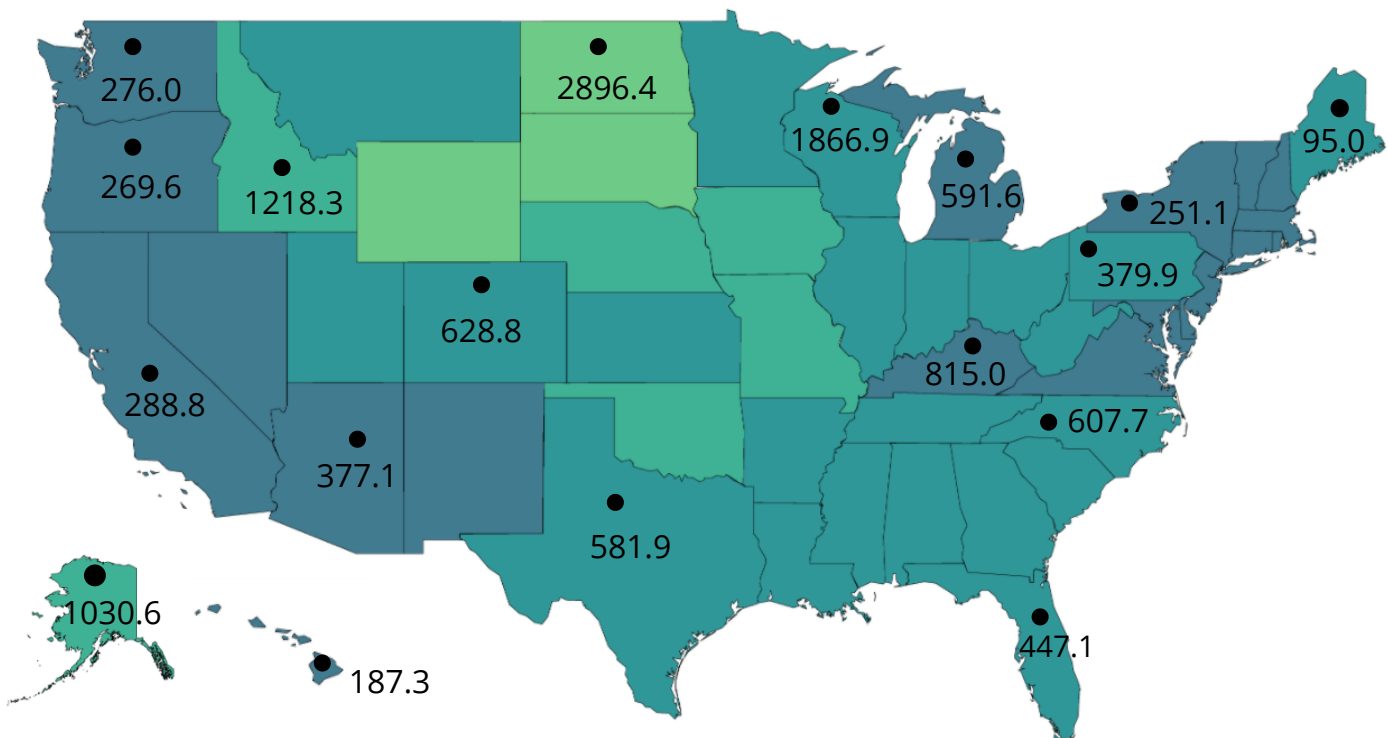
Community Health



Percent who say they always wear a mask when going out, October



Mask Compliance and Selected COVID-19 Incidence* per 100,000, October



*Incidence is the occurrence of new cases of disease in a population over a period of time



Community Health

