

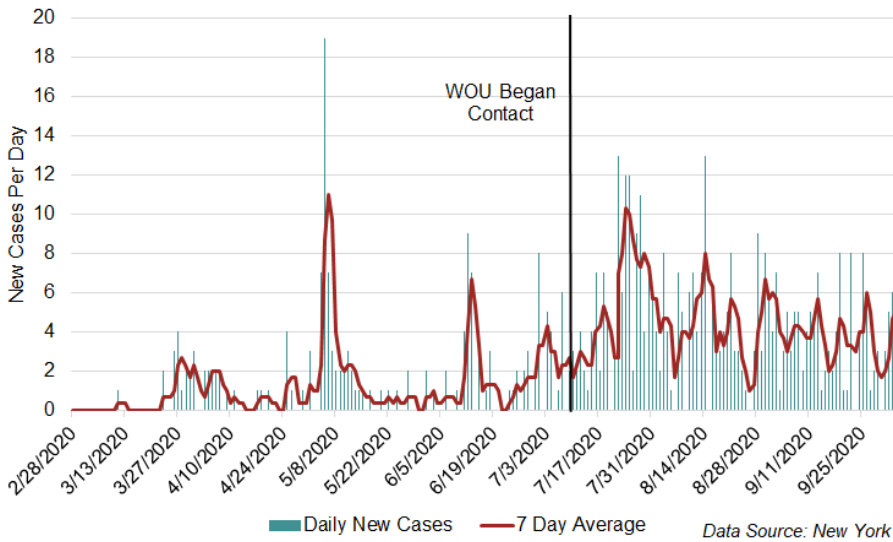
Cumulative Case Numbers:
Oregon: 34,771 • Polk: 553 • Marion 4,924

Individuals Currently Being Traced by Polk County/WOU Contact Tracing Team: **82**

County Rankings of Incidence in the Last Week

Polk: 22nd (was 21st)
Marion: 5th (was 7th)

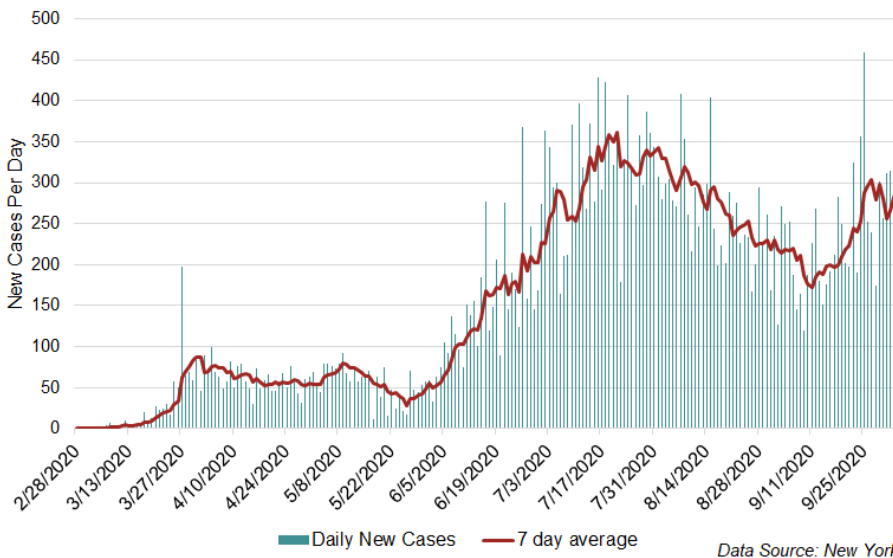
Daily New Cases of COVID-19, Polk County, Oregon
as of October 4, 2020



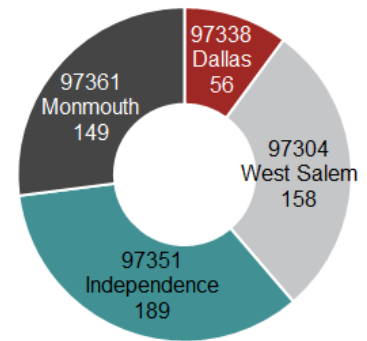
Headlines: Oregon

- 10/3/20 The White House announced they will provide 100 million rapid tests to states through the end of the year. [Oregon](#) could receive 65,000 to 80,000 tests a week, allowing for more relaxed screening criteria and a more aggressive response to workplace outbreaks. Oregon officials will announce more plans this week.
- 9/30/20 More than 400,000 people have signed the U.S. National Institutes of Health's online COVID-19 vaccine registry to be possible volunteers. For more information on how to register and the process of vaccine trials [click here](#).

Daily New Cases in Oregon
as of October 4, 2020



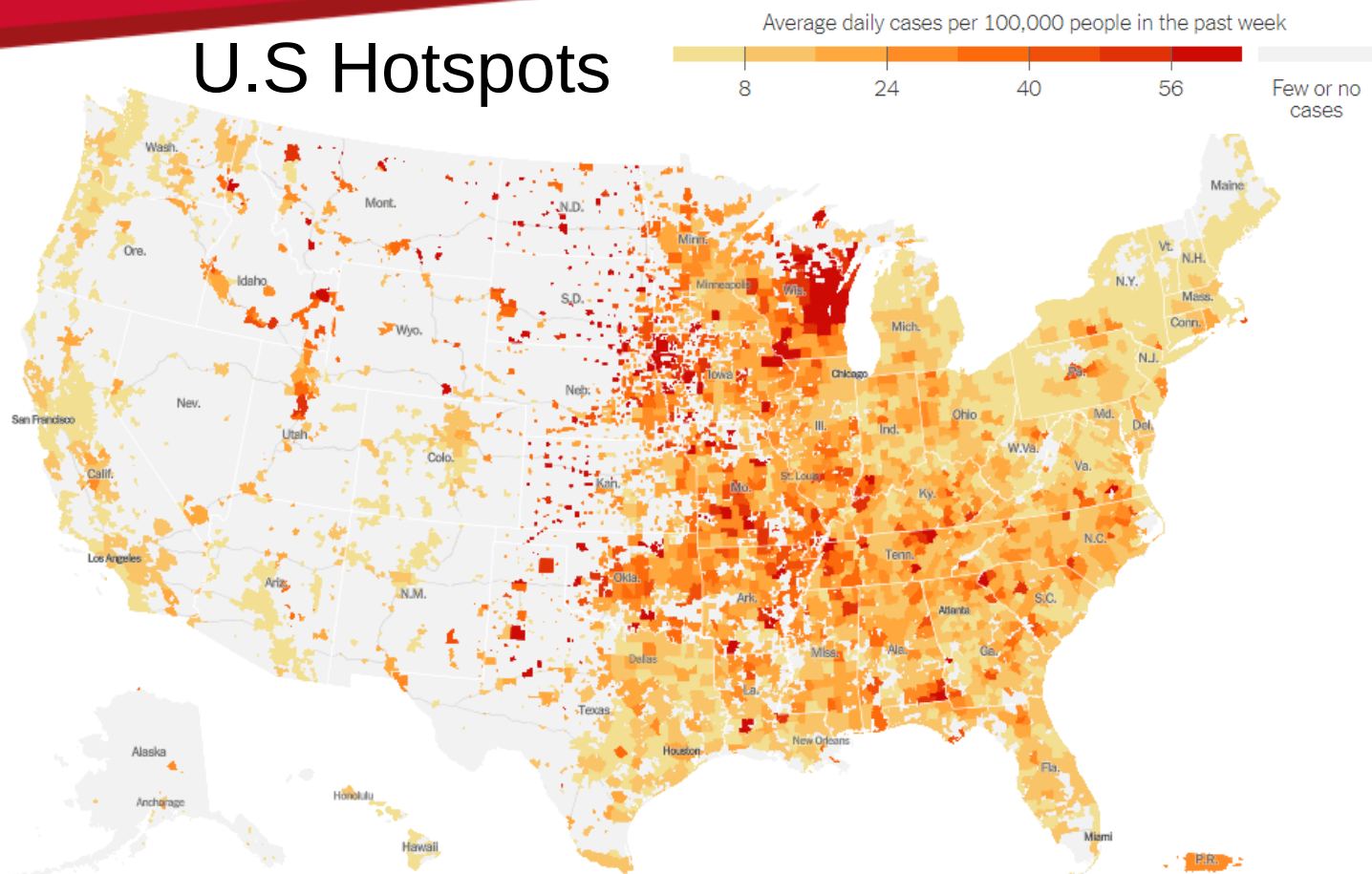
COVID-19 Incidence (per 100,000)
by Zip Code, Polk County, Oregon:
September, 2020



Newsletter Produced by: Maddie Dirren, Adam Chynoweth, Queenie Love Agbayani, Jenny Leon-Perez, Dr. Emily Vala-Haynes, Dr. Megan Patton-Lopez



U.S Hotspots



Vaccine Update

Vaccines in Phase 3 Clinical Trials in the United States (10/5/20)

	Johnson & Johnson	Moderna	Pfizer
Entered Phase 3	September 23	July 27	July 27
Goal # in trial	60,000	30,000	44,000
Storage temperature	"Refrigerated not frozen"	-4 degrees F	-94 degrees F
# Doses	1	2 (28 days apart)	2 (21 days apart)
Expected date to evaluate efficacy (Goal: 60%)*	End of December	End of December	October
* If data show that a vaccine has been highly effective, companies may seek emergency authorization from the FDA before the expected date.			

Vaccines must be tested in the United States in order to be distributed in this country.

Vaccination relies on a "cold chain" (vaccines must be kept at the recommended temperature throughout the distribution process). The colder a vaccine must be kept, the more complicated this process is.

Vaccines must be at least 50% effective (the seasonal flu vaccine is typically 30-60% effective) to be approved by the FDA. Typically, at least 151 cases of COVID-19 must occur in the study population before data can be evaluated.