

ACE LEARNER SUCCESS LAB

GETTING STARTED

Welcome to the pilot cohort of the Learner Success Laboratory! ACE looks forward to working with you over the coming months as you develop a comprehensive plan to enhance learner success at your institution.

The Learner Success Lab (LSL) process will officially launch with an opening meeting for all incoming cohort members in Washington, DC* in October. To prepare for the opening meeting, here are a few actions you can take to lay the groundwork for a successful LSL experience:

REVIEW THE LEARNER SUCCESS LAB TIMELINE AND EXPECTATIONS

The invitation letter your institution received offers a framework for the program and outlines your obligations as a participant. The [LSL website](#) provides additional details. You will also receive a document that summarizes the program timeline and deliverables for your cohort. Key milestones to be aware of include:

- Three **cohort meetings** in Washington, DC
- **Site visit** conducted by your ACE-appointed Lab advisor
- **Peer review visit** at the conclusion of the program

CONNECT WITH THE OTHER INSTITUTIONS IN YOUR COHORT

Networking with your cohort colleagues is an important part of the lab experience. Following the cohort announcement and media release, ACE will connect you with your fellow cohort members by email. We will also provide you with **free access to ACE Engage[®]**, a platform for learning, connection, and community with your colleagues and other member institutions. Engage houses a library of resources and an interactive discussion space. We encourage you to explore Engage at your own pace. We will provide some onboarding materials and facilitated discussion in advance of the opening meeting and throughout the lab process.

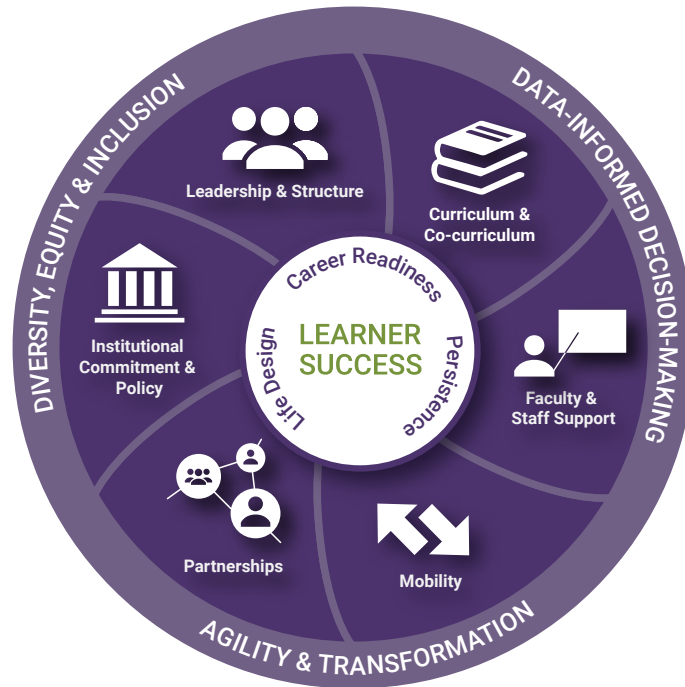
APPOINT LAB COMMITTEE LEADERS

A self-appointed lab committee will lead and coordinate the bulk of your institution's work in the Learner Success Lab. Prior to the opening meeting, you should appoint **at least two** (and up to four) **committee co-chairs** who will spearhead the Lab process for your institution. Co-chairs will attend the opening meeting, serve as ACE's primary Lab contacts, and identify colleagues to comprise the balance of your institution's Lab committee.

- Your lab committee should include faculty, staff, and administrators representing an inclusive variety of departments, units and offices across the institution. You will receive further detailed guidance on committee (and subcommittee) composition in the coming weeks.

*Given the current pandemic and its impact on travel and in-person gatherings, the opening meeting of the pilot cohort will be held virtually. Details will follow.

REVIEW ACE'S MODEL FOR COMPREHENSIVE LEARNER SUCCESS



ACE's Model for Comprehensive Learner Success anchors the entire lab process. Our model comprises a broadened definition of learner success and six core, interrelated target areas:

- Institutional commitment and policy
- Leadership and structure
- Curriculum and co-curriculum
- Faculty and staff support
- Mobility
- Partnerships

The model also includes three strategic lenses through which each element should be framed and considered:

- Diversity, equity, and inclusion
- Data-informed decision-making
- Agility and transformation

We will dissect and explore this model in depth at the opening meeting, and will provide further detailed materials in advance. We will also continue to reference and employ the model throughout the Lab process. For now, as you begin to familiarize yourself with the various components, it should serve as a helpful tool when considering the makeup of your Lab committee and co-chairs.

ACE LEARNER SUCCESS LAB STAFF ARE HERE TO SUPPORT YOU!

We will continue to be in contact with you regarding the lab process, materials, and next steps. We also welcome your questions—please be in touch with us anytime:

Lindsey Myers, Director

lm Myers@acenet.edu

Erin Baldwin, Senior Program Manager

ebaldwin@acenet.edu